

MDH2 Rabbit mAb

Catalog No: #60180

Package Size: #60180-1 50ul #60180-2 100ul

Orders: order@signalwayantibody.comSupport: tech@signalwayantibody.com

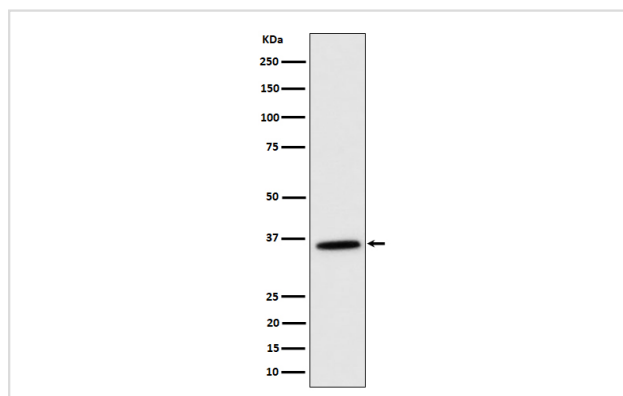
Description

Product Name	MDH2 Rabbit mAb
Host Species	Rabbit
Clonality	Monoclonal
Isotype	Rabbit IgG
Purification	Affinity-chromatography
Applications	WB IHC
Species Reactivity	Human Mouse Rat
Specificity	MDH2 Antibody detects endogenous levels of total MDH2
Immunogen Description	A synthesized peptide derived from human MDH2
Other Names	M MDH; Malate dehydrogenase;
Accession No.	Uniprot:P40926
Uniprot	P40926
Calculated MW	36kDa
Formulation	Rabbit IgG in phosphate buffered saline , pH 7.4, 150mM NaCl, 0.02% sodium azide and 50% glycerol.
Storage	Store at +4°C short term. Store at -20°C long term. Avoid freeze / thaw cycle.

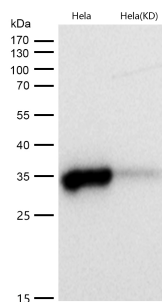
Application Details

WB 1:500~1:2000 IHC 1:50~1:200

Images



Western blot analysis of MDH2 expression in K562 cell lysate.



All lanes use the Antibody at 1:1K dilution for 1 hour at room temperature.

Product Description

Belongs to the LDH/MDH superfamily. MDH type 1 family.

Background

Belongs to the LDH/MDH superfamily. MDH type 1 family.

Note: This product is for in vitro research use only