

Septin 8 Rabbit mAb

Catalog No: #60200

Package Size: #60200-1 50ul #60200-2 100ul

Orders: order@signalwayantibody.comSupport: tech@signalwayantibody.com

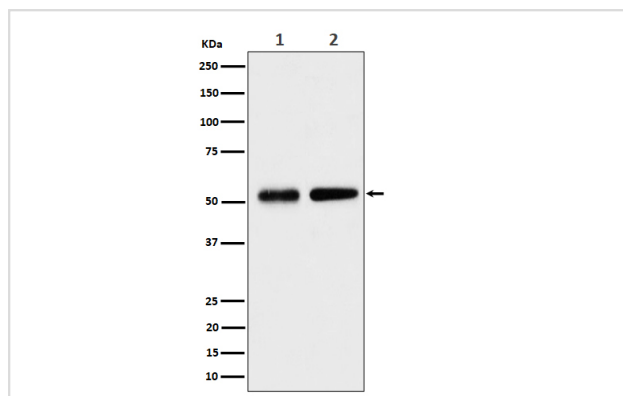
Description

| | |
|-----------------------|--|
| Product Name | Septin 8 Rabbit mAb |
| Host Species | Rabbit |
| Clonality | Monoclonal |
| Isotype | Rabbit IgG |
| Purification | Affinity-chromatography |
| Applications | WB IHC ICC/IF IP FC |
| Species Reactivity | Human Mouse Rat |
| Specificity | Septin 8 Antibody detects endogenous levels of total Septin 8 |
| Immunogen Description | A synthesized peptide derived from human Septin 8 |
| Other Names | SEP2; SEPT8; Septin8; |
| Accession No. | Uniprot:Q92599 |
| Uniprot | Q92599 |
| Formulation | Rabbit IgG in phosphate buffered saline , pH 7.4, 150mM NaCl, 0.02% sodium azide and 50% glycerol. |
| Storage | Store at +4°C short term. Store at -20°C long term. Avoid freeze / thaw cycle. |

Application Details

WB 1:500~1:2000 IHC 1:50~1:200 ICC/IF 1:50~1:200 IP 1:50 FC 1:50

Images



Western blot analysis of Septin 8 expression in (1) HeLa cell lysate; (2) NIH/3T3 cell lysate.

Product Description

Septin 8 (SEPT8) is a member of the highly conserved septin family. Septins are 40- to 60-kD GTPases that assemble as filamentous scaffolds. They are involved in the organization of submembranous structures, in neuronal polarity, and in vesicle trafficking. There are 3 isoforms produced by alternative splicing.

Background

Septin 8 (SEPT8) is a member of the highly conserved septin family. Septins are 40- to 60-kD GTPases that assemble as filamentous scaffolds. They are involved in the organization of submembranous structures, in neuronal polarity, and in vesicle trafficking. There are 3 isoforms produced by alternative splicing.

Note: This product is for in vitro research use only