

## SSX2IP Rabbit mAb

Catalog No: #60235

Package Size: #60235-1 50ul #60235-2 100ul

Orders: [order@signalwayantibody.com](mailto:order@signalwayantibody.com)Support: [tech@signalwayantibody.com](mailto:tech@signalwayantibody.com)

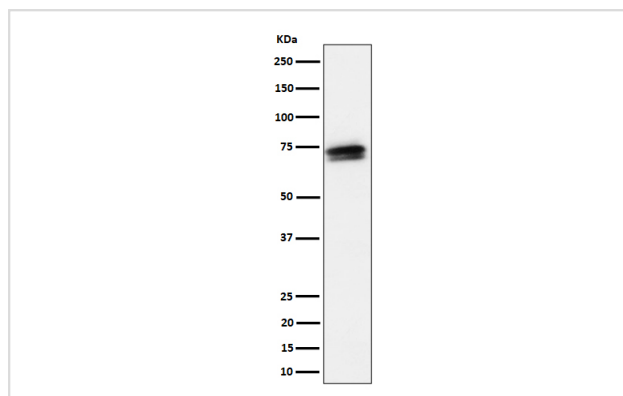
## Description

Product Name	SSX2IP Rabbit mAb
Host Species	Rabbit
Clonality	Monoclonal
Isotype	Rabbit IgG
Purification	Affinity-chromatography
Applications	WB IHC
Species Reactivity	Human
Specificity	SSX2IP Antibody detects endogenous levels of total SSX2IP
Immunogen Description	A synthesized peptide derived from human SSX2IP
Other Names	ADIP; SSX2IP;
Accession No.	Uniprot:Q9Y2D8
Uniprot	Q9Y2D8
Formulation	Rabbit IgG in phosphate buffered saline , pH 7.4, 150mM NaCl, 0.02% sodium azide and 50% glycerol.
Storage	Store at +4°C short term. Store at -20°C long term. Avoid freeze / thaw cycle.

## Application Details

WB 1:500~1:2000 IHC 1:50~1:200

## Images



Western blot analysis of SSX2IP expression in HeLa cell lysate.

## Product Description

Belongs to an adhesion system, which plays a role in the organization of homotypic, interneuronal and heterotypic cell-cell adherens junctions (AJs). May connect the nectin-afadin and E-cadherin-catenin system through alpha-actinin and may be involved in organization of the actin cytoskeleton at AJs through afadin and alpha-actinin.

## Background

---

Belongs to an adhesion system, which plays a role in the organization of homotypic, interneuronal and heterotypic cell-cell adherens junctions (AJs). May connect the nectin-afadin and E-cadherin-catenin system through alpha-actinin and may be involved in organization of the actin cytoskeleton at AJs through afadin and alpha-actinin.

---

Note: This product is for in vitro research use only