

SLC25A12 Rabbit mAb

Catalog No: #60237

Package Size: #60237-1 50ul #60237-2 100ul

Orders: order@signalwayantibody.com

Support: tech@signalwayantibody.com

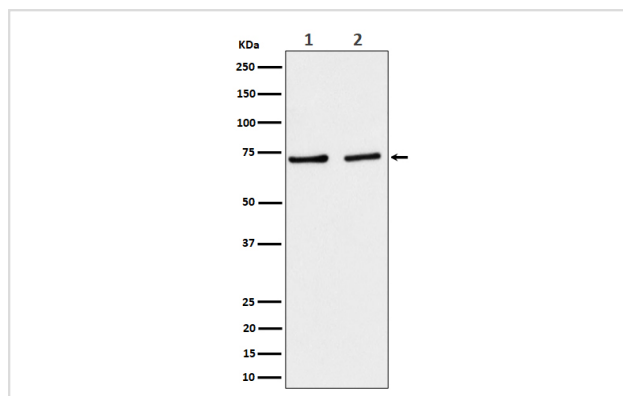
Description

Product Name	SLC25A12 Rabbit mAb
Host Species	Rabbit
Clonality	Monoclonal
Isotype	Rabbit IgG
Purification	Affinity-chromatography
Applications	WB IP
Species Reactivity	Human Mouse Rat
Specificity	SLC25A12 Antibody detects endogenous levels of total SLC25A12
Immunogen Description	A synthesized peptide derived from human SLC25A12
Other Names	AGC1; ARALAR; ARALAR1; SLC25A12;
Accession No.	Uniprot:O75746
Uniprot	O75746
Formulation	Rabbit IgG in phosphate buffered saline , pH 7.4, 150mM NaCl, 0.02% sodium azide and 50% glycerol.
Storage	Store at +4°C short term. Store at -20°C long term. Avoid freeze / thaw cycle.

Application Details

WB 1:500~1:2000 IP 1:50

Images



Western blot analysis of SLC25A12 expression in (1) A431 cell lysate; (2) NIH/3T3 cell lysate.

Product Description

Calcium-dependent mitochondrial aspartate and glutamate carrier. May have a function in the urea cycle.

Background

Calcium-dependent mitochondrial aspartate and glutamate carrier. May have a function in the urea cycle.

Note: This product is for in vitro research use only