

## Ube1L / UBA7 Rabbit mAb

Catalog No: #60275

Package Size: #60275-1 50ul #60275-2 100ul

Orders: order@signalwayantibody.com

Support: tech@signalwayantibody.com

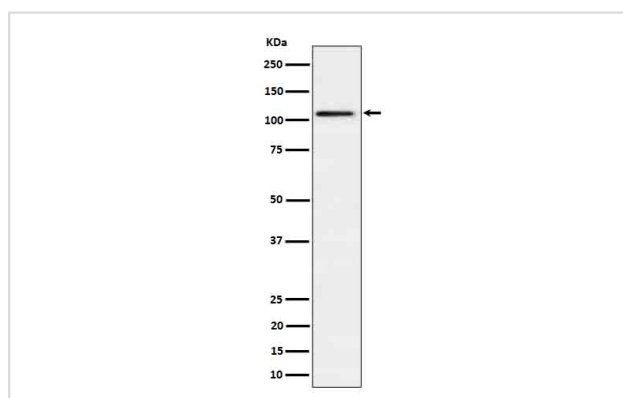
## Description

|                       |   |
|-----------------------|---|
| Product Name          | Ube1L / UBA7 Rabbit mAb   |
| Host Species          | Rabbit  |
| Clonality             | Monoclonal  |
| Isotype               | Rabbit IgG  |
| Purification          | Affinity-chromatography   |
| Applications          | WB IHC FC   |
| Species Reactivity    | Human Mouse Rat   |
| Specificity           | Ube1L / UBA7 Antibody detects endogenous levels of total Ube1L / UBA7   |
| Immunogen Description | A synthesized peptide derived from human Ube1L / UBA7   |
| Other Names           | UBA1B; UBA7; UBE1L; UBE2; Ubiquitin activating enzyme 2; Ubiquitin-activating enzyme 7; Ubiquitin-activating enzyme E1 homolog; |
| Accession No.         | Uniprot:P41226  |
| Uniprot               | P41226  |
| Formulation           | Rabbit IgG in phosphate buffered saline , pH 7.4, 150mM NaCl, 0.02% sodium azide and 50% glycerol.                              |
| Storage               | Store at +4°C short term. Store at -20°C long term. Avoid freeze / thaw cycle.  |

## Application Details

WB 1:500~1:2000 IHC 1:50~1:200 FC 1:50

## Images



Western blot analysis of Ube1L / UBA7 in HepG2 cell lysate.

## Product Description

Activates ubiquitin by first adenylating with ATP its C-terminal glycine residue and thereafter linking this residue to the side chain of a cysteine residue in E1, yielding an ubiquitin-E1 thioester and free AMP.

## Background

---

Activates ubiquitin by first adenylating with ATP its C-terminal glycine residue and thereafter linking this residue to the side chain of a cysteine residue in E1, yielding an ubiquitin-E1 thioester and free AMP.

---

Note: This product is for in vitro research use only