

## KV3.1 Polyclonal Antibody

Catalog No: #49027

Package Size: #49027-1 50ul #49027-2 100ul

Orders: [order@signalwayantibody.com](mailto:order@signalwayantibody.com)Support: [tech@signalwayantibody.com](mailto:tech@signalwayantibody.com)

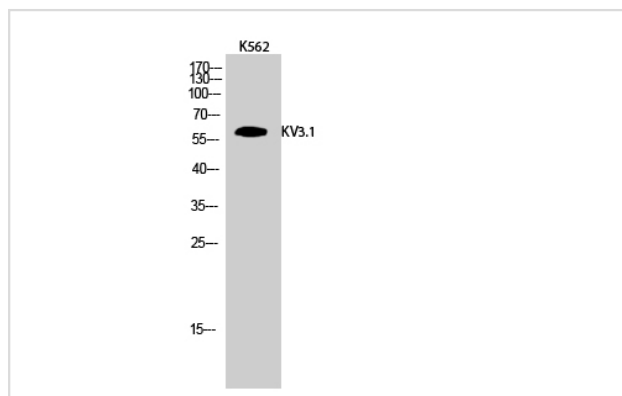
## Description

Product Name	KV3.1 Polyclonal Antibody
Host Species	Rabbit
Clonality	Polyclonal
Isotype	IgG
Purification	The antibody was affinity-purified from rabbit antiserum by affinity-chromatography using epitope-specific immunogen.
Applications	WB;IHC;IF;ELISA
Species Reactivity	Human;Mouse;Rat
Specificity	KV3.1 Polyclonal Antibody detects endogenous levels of KV3.1 protein.
Immunogen Description	Synthesized peptide derived from KV3.1 .
Target Name	KCNC1
Other Names	KCNC1; Potassium voltage-gated channel subfamily C member 1; NGK2; Voltage-gated potassium channel subunit Kv3.1; Voltage-gated potassium channel subunit Kv4
Uniprot	P48547
GeneID	3746
Calculated MW	60kD
Concentration	1mg/ml
Formulation	Liquid in PBS containing 50% glycerol, 0.5% BSA and 0.02% sodium azide.
Storage	Store at -20°C/1 year

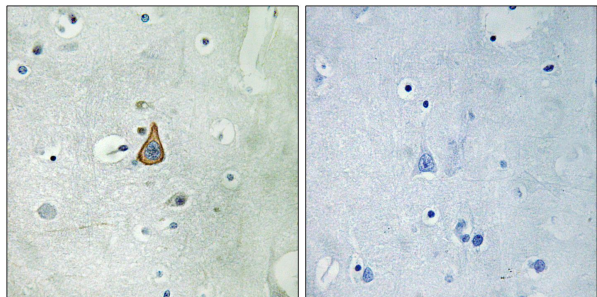
## Application Details

WB 1:500 - 1:2000. IHC 1:100 - 1:300. ELISA: 1:5000.. IF 1:50-200

## Images



Western Blot analysis of K562 cells using KV3.1 Polyclonal Antibody



Immunohistochemistry analysis of paraffin-embedded human brain, using KCNC1 Antibody. The lane on the right is blocked with the KCNC1 peptide.

---

Note: This product is for in vitro research use only