

# METRL rabbit pAb

Catalog No: #49186



Package Size: #49186-1 50ul #49186-2 100ul

Orders: [order@signalwayantibody.com](mailto:order@signalwayantibody.com)  
Support: [tech@signalwayantibody.com](mailto:tech@signalwayantibody.com)

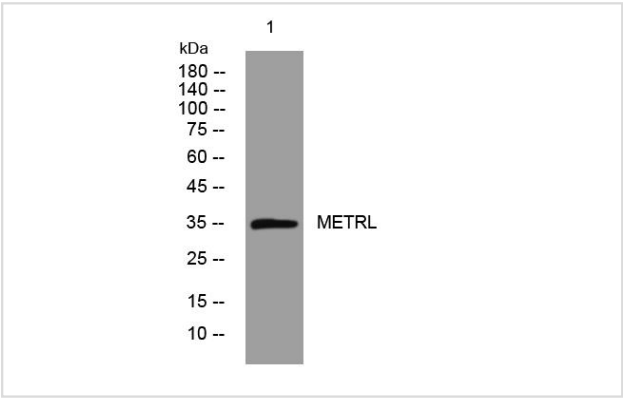
## Description

Product Name	METRL rabbit pAb
Host Species	Rabbit
Clonality	Polyclonal
Isotype	IgG
Purification	The antibody was affinity-purified from rabbit antiserum by affinity-chromatography using epitope-specific immunogen.
Applications	WB;IHC
Species Reactivity	Human;Mouse;Rat
Specificity	This antibody detects endogenous levels of METRL at Human/Mouse/Rat
Immunogen Description	Synthesized peptide derived from human METRL
Target Name	METRNL
Uniprot	Q641Q3
GeneID	284207
Calculated MW	34kD
Concentration	1 mg/ml
Formulation	Liquid in PBS containing 50% glycerol, 0.5% BSA and 0.02% sodium azide.
Storage	Store at -20°C/1 year

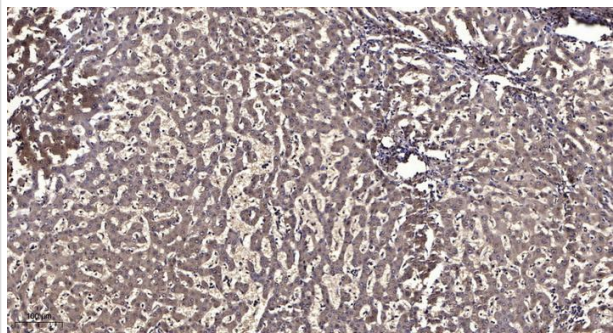
## Application Details

WB 1:500-2000;IHC 1:50-300

## Images



Western blot analysis of lysates from HpeG2 cells, primary antibody was diluted at 1:1000, 4°over night



Immunohistochemical analysis of paraffin-embedded human liver cancer.

---

Note: This product is for in vitro research use only