

# ZIP8 Antibody

Catalog No: #25231

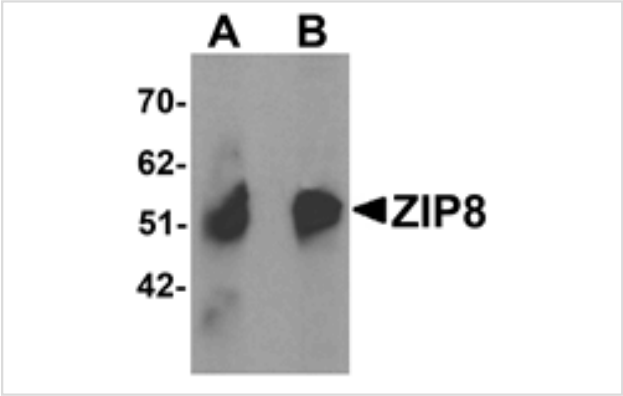


Orders: [order@signalwayantibody.com](mailto:order@signalwayantibody.com)  
Support: [tech@signalwayantibody.com](mailto:tech@signalwayantibody.com)

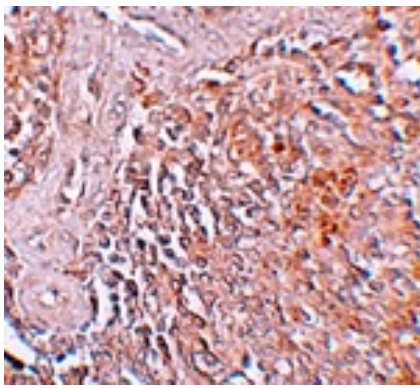
## Description

Product Name	ZIP8 Antibody
Host Species	Rabbit
Clonality	Polyclonal
Purification	Affinity chromatography purified via peptide column
Applications	ELISA WB IHC
Species Reactivity	Hu
Specificity	ZIP8 antibody is predicted to not cross-react with other ZIP family members.
Immunogen Type	Peptide
Immunogen Description	Raised against a 18 amino acid peptide near the carboxy terminus of human ZIP8.
Target Name	ZIP8
Other Names	Solute carrier family 39 member A8, Slc39A8, PP3105, BIGM103, LZT-Hs6
Accession No.	Swiss-Prot:Q9C0K1Gene ID:64116
Uniprot	Q9C0K1
GeneID	64116;
Concentration	1mg/ml
Formulation	Supplied in PBS containing 0.02% sodium azide.
Storage	Can be stored at -20°C, stable for one year. As with all antibodies care should be taken to avoid repeated freeze thaw cycles. Antibodies should not be exposed to prolonged high temperatures.

## Images



Western blot analysis of ZIP8 in human spleen tissue lysate with ZIP8 antibody at (A) 1 and (B) 2 ug/mL.



Immunohistochemistry of ZIP8 in human spleen tissue with ZIP8 antibody at 5 ug/mL.

## Background

The zinc transporter ZIP8, also known as SLC39A8, is a member of a family of divalent ion transporters. Zinc is an essential ion for cells and plays significant roles in the growth, development, and differentiation. The zinc transporter family is divided into four subfamilies (I, II, LIV-1 and gnfA). ZIP8 is glycosylated and located at the plasma membrane and mitochondria. It has been identified as the transporter responsible for transport of the toxic Cadmium cation. ZIP8 has also been suggested to play a role in the regulation of interferon-gamma expression in activated human T cells.

Note: This product is for in vitro research use only