

ZIP10 Antibody

Catalog No: #25233

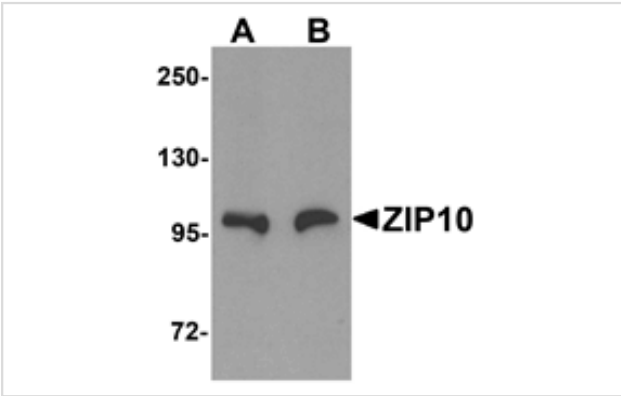


Orders: order@signalwayantibody.com
Support: tech@signalwayantibody.com

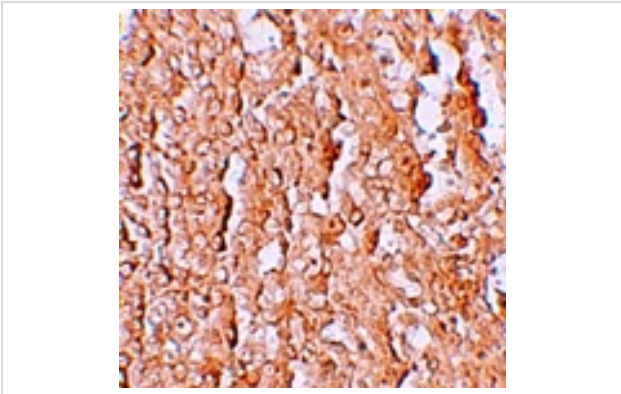
Description

Product Name	ZIP10 Antibody
Host Species	Rabbit
Clonality	Polyclonal
Purification	Affinity chromatography purified via peptide column
Applications	ELISA WB IHC
Species Reactivity	Hu Ms Rt
Immunogen Type	Peptide
Immunogen Description	Raised against an 18 amino acid peptide near the center of human ZIP10.
Target Name	ZIP10
Other Names	Solute carrier family 39 member a10, Slc39a10, LZT-Hs2
Accession No.	Swiss-Prot:Q9ULF5Gene ID:57181
Uniprot	Q9ULF5
GeneID	57181;
Concentration	1mg/ml
Formulation	Supplied in PBS containing 0.02% sodium azide.
Storage	Antibody can be stored at 4°C up to one year. Antibodies should not be exposed to prolonged high temperatures.

Images



Western blot analysis of ZIP10 in human spleen tissue lysate with ZIP10 antibody at (A) 1 and (B) 2 ug/mL.



Immunohistochemistry of ZIP10 in human spleen tissue with ZIP10 antibody at 2.5 ug/mL.

Background

ZIP10, also known as Slc39A10, is a widely expressed zinc transporter with nine transmembrane domains. Zinc is an essential ion for cells and plays significant roles in the growth, development, and differentiation. ZIP10 mRNA was found to be significantly decreased in the intestines and kidneys of hypothyroid rats and increased in those of hyperthyroid rats, indicating that ZIP10 is positively regulated by thyroid hormones. ZIP10 mRNA was also found to be upregulated in invasive and metastatic breast cancer and cell lines, suggesting that ZIP10 could serve as a possible marker for the metastatic phenotype and possibly a target for novel treatment strategies.

Note: This product is for in vitro research use only