

SDS3 rabbit pAb

Catalog No: #48944

Package Size: #48944-1 50ul #48944-2 100ul

Orders: order@signalwayantibody.comSupport: tech@signalwayantibody.com

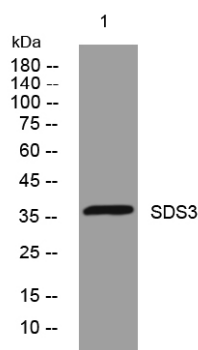
Description

Product Name	SDS3 rabbit pAb
Host Species	Rabbit
Clonality	Polyclonal
Isotype	IgG
Purification	The antibody was affinity-purified from rabbit antiserum by affinity-chromatography using epitope-specific immunogen.
Applications	WB;IHC
Species Reactivity	Human;Mouse
Specificity	This antibody detects endogenous levels of SDS3 at Human/Mouse
Immunogen Description	Synthesized peptide derived from human SDS3
Target Name	SUDS3 SAP45 SDS3
Uniprot	Q9H7L9
GeneID	64426
Calculated MW	36kD
Concentration	1 mg/ml
Formulation	Liquid in PBS containing 50% glycerol, 0.5% BSA and 0.02% sodium azide.
Storage	Store at -20°C/1 year

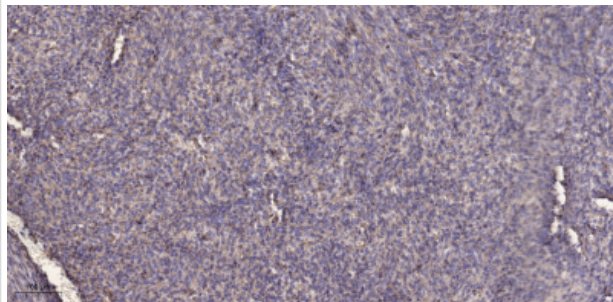
Application Details

WB 1:500-2000;IHC-p 1:50-300

Images



Western blot analysis of lysates from 293T cells, primary antibody was diluted at 1:1000, 4° over night



Immunohistochemical analysis of paraffin-embedded human Colon cancer.

Note: This product is for in vitro research use only