

CA19-9 Mouse mAb

Catalog No: #62060

Package Size: #62060-1 100ul

Orders: order@signalwayantibody.comSupport: tech@signalwayantibody.com

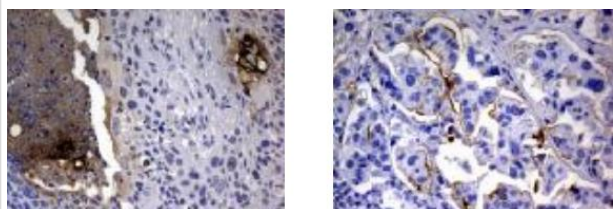
Description

Product Name	CA19-9 Mouse mAb
Purification	Purified from mouse ascites fluids by affinity chromatography
Applications	IHC
Species Reactivity	Human
Immunogen Description	SW1116 human colon carcinoma cell line
Concentration	1.0 mg/ml
Formulation	PBS (PH 7.3) containing 1% BSA, 50% glycerol and 0.02% sodium azide.
Storage	Store at -20 Λ C

Application Details

IHC 1:30-1:150

Images



The image on the left is immunohistochemistry of paraffin-embedded carcinoma of human lung tissue, on the right is immunohistochemistry of paraffin-embedded carcinoma of human bladder tissue using (CA19-9 Antibody) at dilution 1/40. (Original magnification: Γ 200)

Background

CA 19-9 (carbohydrate antigen 19-9, also called cancer antigen 19-9 or sialylated Lewis (a) antigen) is a tumor marker that is used primarily in the management of pancreatic cancer. CA 19-9 can be elevated in many types of gastrointestinal cancer, such as colorectal cancer, esophageal cancer and hepatocellular carcinoma. Apart from cancer, elevated levels may also occur in pancreatitis, cirrhosis, and diseases of the bile ducts. It can be elevated in people with obstruction of the bile ducts

Note: This product is for in vitro research use only