

KMO Rabbit pAb

Catalog No: #62071



Package Size: #62071-1 50ul #62071-2 100ul

Orders: [order@signalwayantibody.com](mailto:order@signalwayantibody.com)  
Support: [tech@signalwayantibody.com](mailto:tech@signalwayantibody.com)

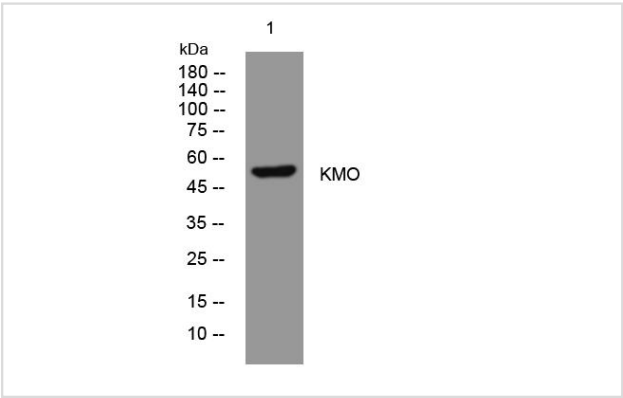
Description

Product Name	KMO Rabbit pAb
Host Species	Rabbit
Clonality	Polyclonal
Purification	The antibody was affinity-purified from rabbit antiserum by affinity-chromatography using epitope-specific immunogen.
Applications	WB;ELISA;IHC
Species Reactivity	Human;Mouse;Rat
Specificity	This antibody detects endogenous levels of KMO at Human/Mouse/Rat
Immunogen Description	Synthesized peptide derived from human KMO
Target Name	KMO
Uniprot	O15229
GeneID	8564
Concentration	1 mg/ml
Formulation	Liquid in PBS containing 50% glycerol, 0.5% BSA and 0.02% sodium azide.
Storage	Store at -20°C/1 year

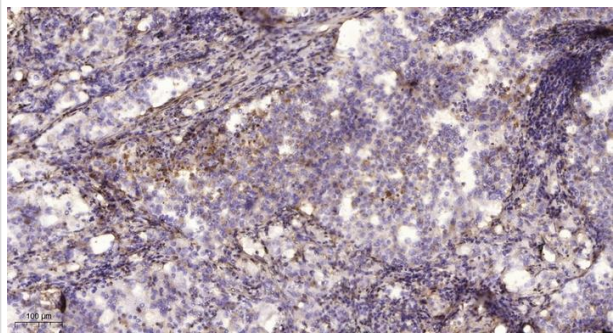
Application Details

WB 1:500-2000; IHC 1:50-300; ELISA 1:2000-20000

Images



Western blot analysis of lysates from CACO2 cells, primary antibody was diluted at 1:1000, 4°over night



Immunohistochemical analysis of paraffin-embedded human lung cancer.

---

Note: This product is for in vitro research use only