

BCKDHA (Phospho Ser292/Ser337) Antibody

Catalog No: #62242

Package Size: #62242-1 100ul

Orders: order@signalwayantibody.comSupport: tech@signalwayantibody.com

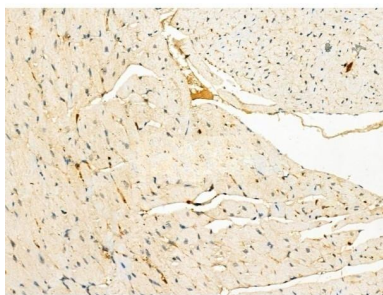
Description

Product Name	BCKDHA (Phospho Ser292/Ser337) Antibody
Host Species	Rabbit
Clonality	Polyclonal
Purification	The antibody is from purified rabbit serum by affinity purification via sequential chromatography on phospho-peptide and non-phospho-peptide affinity columns.
Applications	IHC
Species Reactivity	Human; Mouse; Rat
Specificity	BCKDHA (Phospho Ser292/Ser337) Antibody detects endogenous levels of BCKDHA only when phosphorylated at Ser292/337.
Immunogen Description	A synthesized peptide derived from human BCKDHA around the phosphorylation site of Ser292/337.
Uniprot	P12694
Formulation	Rabbit IgG in phosphate buffered saline , pH 7.4, 150mM NaCl, 0.02% sodium azide and 50% glycerol. Store at -20 °C. Stable for 12 months from date of receipt.
Storage	Shipped at 4°C. Store at -20°C for one year. Avoid repeated freeze/thaw cycles.

Application Details

IHC 1:50-1:200

Images



BCKDHA (Phospho Ser292/Ser337) Antibody at 1/100 staining Mouse heart tissue by IHC-P.

The sample was formaldehyde fixed and a heat mediated antigen retrieval step in citrate buffer was performed. The sample was then blocked and incubated with the primary antibody at 4°C overnight. An HRP conjugated anti-Rabbit antibody was used as the secondary antibody.

Note: This product is for in vitro research use only