

## High density lipoprotein Antibody

Catalog No: #62102

Orders: [order@signalwayantibody.com](mailto:order@signalwayantibody.com)Support: [tech@signalwayantibody.com](mailto:tech@signalwayantibody.com)

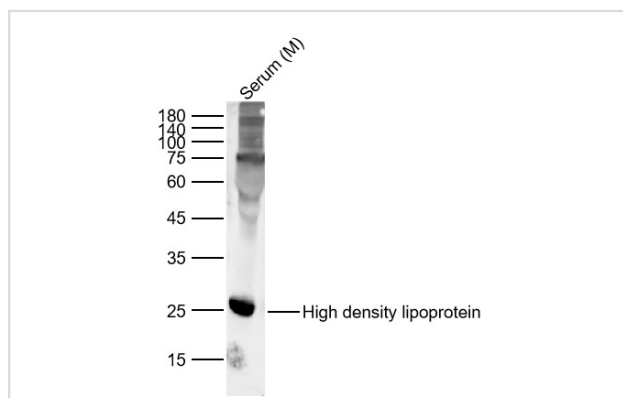
## Description

Product Name	High density lipoprotein Antibody
Brief Description	Rabbit Polyclonal
Host Species	Rabbit
Clonality	Polyclonal
Purification	affinity purified by Protein A
Applications	WB;IHC;IF
Species Reactivity	Human; Mouse
Specificity	The antibody detects endogenous level of total High density lipoprotein protein
Immunogen Description	human high density lipoprotein purified from plasma
Calculated MW	28 kDa
Formulation	0.01M TBS (pH7.4) with 1% BSA, 0.02% Proclin300 and 50% Glycerol.
Storage	Shipped at 4°C. Store at -20°C for one year. Avoid repeated freeze/thaw cycles.

## Application Details

WB 1:500-2000;IHC 1:100-500; IF 1:100-500

## Images



All lanes : High density lipoprotein Antibody at 1/1k dilution

Lane 1 : Mouse Serum

Lysates/proteins at 20 ug per lane.

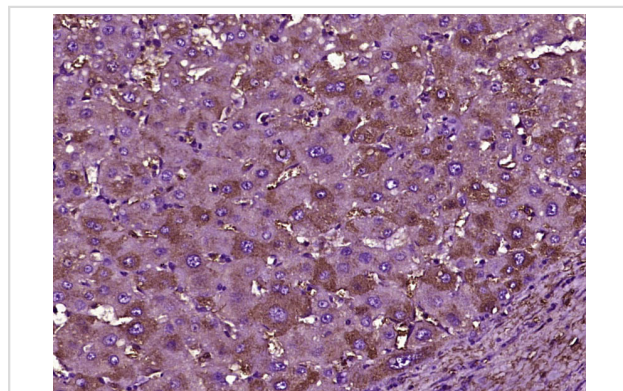
Secondary

All lanes : Goat Anti-Rabbit IgG H&amp;L (HRP) at 1/5000 dilution

Predicted band size: 28 kDa

Observed band size: 28kDa

Exposure time: 15 seconds



Formalin-fixed, paraffin-embedded Human liver carcinoma stained for High density lipoprotein Antibody was diluted at 1:400 dilution in immunohistochemical analysis.

## Background

---

High-density lipoproteins (HDL) are one of the five major groups of lipoproteins. Lipoproteins are complex particles composed of multiple proteins which transport all fat molecules (lipids) around the body within the water outside cells. They are typically composed of 80-100 proteins per particle (organized by one, two or three ApoA; more as the particles enlarge picking up and carrying more fat molecules) and transporting up to hundreds of fat molecules per particle. Unlike the larger lipoprotein particles which deliver fat molecules to cells, HDL particles remove fat molecules from cells which need to export fat molecules. The fats carried include cholesterol, phospholipids, and triglycerides; amounts of each are quite variable.

---

Note: This product is for in vitro research use only