

Sec16A Antibody

Catalog No: #62174

Orders: order@signalwayantibody.comSupport: tech@signalwayantibody.com

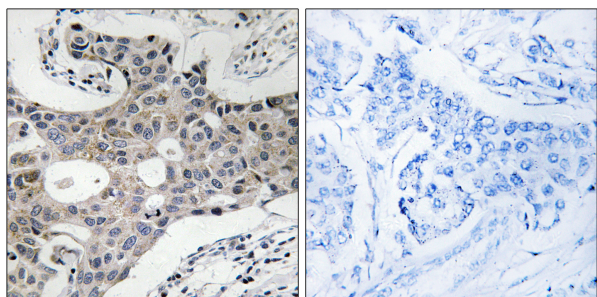
Description

Product Name	Sec16A Antibody
Brief Description	Rabbit Polyclonal
Host Species	Rabbit
Clonality	Polyclonal
Purification	The antibody was affinity-purified from rabbit antiserum by affinity-chromatography using epitope-specific immunogen.
Applications	IHC;IF
Species Reactivity	Human; Mouse
Specificity	The antibody detects endogenous level of total Sec16A protein
Immunogen Type	Peptide
Immunogen Description	The antiserum was produced against synthesized peptide derived from human SEC16A
Target Name	SEC16A ; KIAA0310 ; SEC16 ;
Uniprot	O15027;
Formulation	Liquid in PBS containing 50% glycerol, 0.5% BSA and 0.02% sodium azide.
Storage	Shipped at 4°C. Store at -20°C for one year. Avoid repeated freeze/thaw cycles.

Application Details

IHC 1:100-1:300;IF 1:50-200

Images



Formalin-fixed, paraffin-embedded human breast carcinoma stained for SEC16A Antibody was diluted at 1:100 dilution in immunohistochemical analysis.

Background

This gene encodes a protein that forms part of the Sec16 complex. This protein has a role in protein transport from the endoplasmic reticulum (ER) to the Golgi and mediates COPII vesicle formation at the transitional ER. Alternative splicing results in multiple transcript variants that encode different protein isoforms. [provided by RefSeq, Feb 2013]

Note: This product is for in vitro research use only