

RLF Antibody

Catalog No: #62182

Orders: order@signalwayantibody.comSupport: tech@signalwayantibody.com

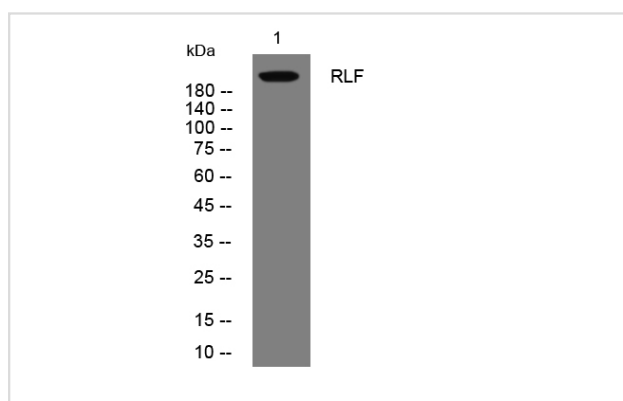
Description

| | |
|-----------------------|---|
| Product Name | RLF Antibody |
| Brief Description | Rabbit Polyclonal |
| Host Species | Rabbit |
| Clonality | Polyclonal |
| Purification | The antibody was affinity-purified from rabbit antiserum by affinity-chromatography using epitope-specific immunogen. |
| Applications | WB;IHC |
| Species Reactivity | Human |
| Specificity | The antibody detects endogenous level of total RLF protein |
| Immunogen Type | Peptide |
| Immunogen Description | Synthesized peptide derived from human RLF |
| Target Name | RLF |
| Uniprot | Q13129; |
| Calculated MW | Predicted band size: 211 kDa |
| Formulation | Liquid in PBS containing 50% glycerol, 0.5% BSA and 0.02% sodium azide. |
| Storage | Shipped at 4°C. Store at -20°C for one year. Avoid repeated freeze/thaw cycles. |

Application Details

WB 1:500-2000; IHC 1:50-300;

Images



All lanes : RLF Antibody at 1/1k dilution

Lane 1 : AD293 cells

Lysates/proteins at 20 ug per lane.

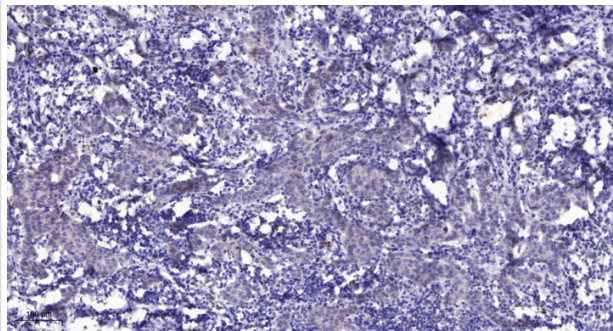
Secondary

All lanes : Goat Anti-Rabbit IgG H&L (HRP) at 1/5000 dilution

Predicted band size: 211 kDa

Observed band size: 211 kDa

Exposure time: 34 seconds



Formalin-fixed, paraffin-embedded human Breast cancer stained for RLF Antibody was diluted at 1:200 dilution in immunohistochemical analysis.

Note: This product is for in vitro research use only