

ZNF687 Antibody

Catalog No: #62105



Orders: [order@signalwayantibody.com](mailto:order@signalwayantibody.com)  
Support: [tech@signalwayantibody.com](mailto:tech@signalwayantibody.com)

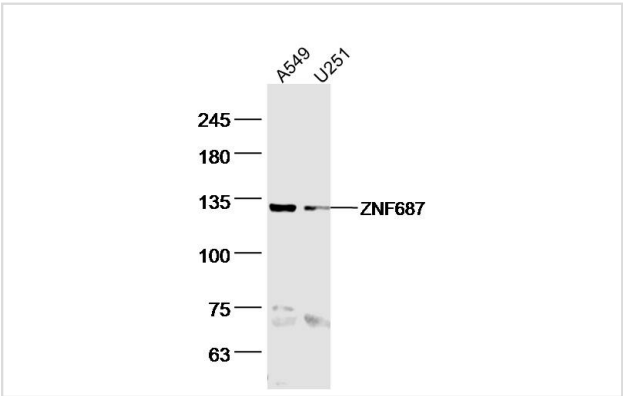
Description

Product Name	ZNF687 Antibody
Brief Description	Rabbit Polyclonal
Host Species	Rabbit
Clonality	Polyclonal
Purification	affinity purified by Protein A
Applications	WB;IHC;IF
Species Reactivity	Human
Specificity	The antibody detects endogenous level of total ZNF687 protein
Immunogen Type	Peptide
Immunogen Description	KLH conjugated synthetic peptide derived from human ZNF687
Uniprot	Q8N1G0;
Calculated MW	Predicted band size: 129 kDa
Formulation	0.01M TBS (pH7.4) with 1% BSA, 0.02% Proclin300 and 50% Glycerol.
Storage	Shipped at 4°C. Store at -20°C for one year. Avoid repeated freeze/thaw cycles.

Application Details

WB 1:500-2000;IHC 1:100-500;IF 1:100-500

Images



All lanes : ZNF687 Antibody at 1/300 dilution

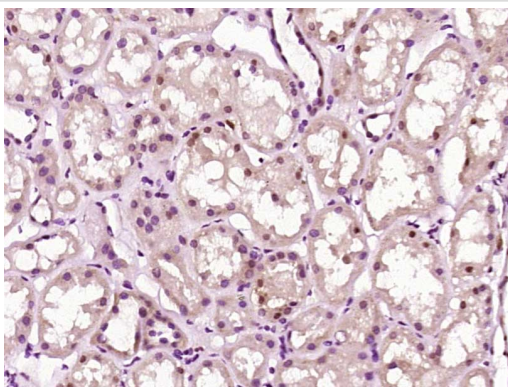
Lane 1 : A549 whole cell lysates  
Lane 2 : U251 whole cell lysates

Lysates/proteins at 20 ug per lane.

Secondary  
All lanes : Goat Anti-Rabbit IgG H&L (HRP) at 1/5000 dilution

Predicted band size: 129 kDa  
Observed band size: 129 kDa

Exposure time: 25 seconds



Formalin-fixed, paraffin-embedded Human kidney stained for ZNF687 Antibody was diluted at 1:400 dilution in immunohistochemical analysis.

---

Note: This product is for in vitro research use only