

SAP30 Antibody

Catalog No: #62186

Orders: order@signalwayantibody.comSupport: tech@signalwayantibody.com

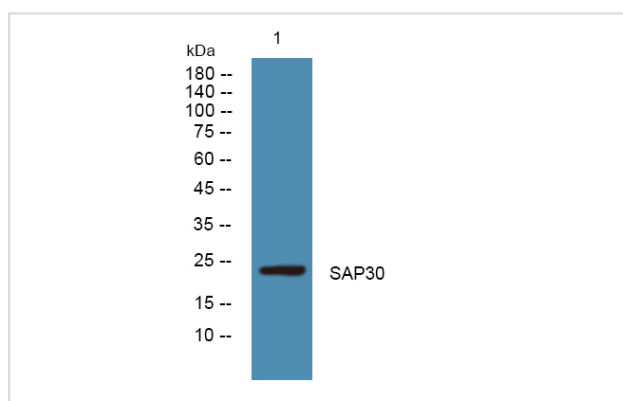
Description

Product Name	SAP30 Antibody
Brief Description	Rabbit Polyclonal
Host Species	Rabbit
Clonality	Polyclonal
Purification	The antibody was affinity-purified from rabbit antiserum by affinity-chromatography using epitope-specific immunogen.
Applications	WB
Species Reactivity	Human; Mouse
Specificity	The antibody detects endogenous level of total SAP30 protein
Immunogen Type	Peptide
Immunogen Description	Synthesized peptide derived from human protein
Target Name	SAP30;
Uniprot	O75446;
Calculated MW	Predicted band size: 24 kDa
Formulation	Liquid in PBS containing 50% glycerol, and 0.02% sodium azide.
Storage	Shipped at 4°C. Store at -20°C for one year. Avoid repeated freeze/thaw cycles.

Application Details

WB 1:500-2000

Images



All lanes : SAP30 Antibody at 1/1k dilution

Lane 1 : PC12 whole cell lysates

Lysates/proteins at 20 ug per lane.

Secondary

All lanes : Goat Anti-Rabbit IgG H&L (HRP) at 1/5000 dilution

Predicted band size: 24 kDa

Observed band size: 24 kDa

Exposure time: 32 seconds

Note: This product is for in vitro research use only