

LIN54 Antibody

Catalog No: #62189

Orders: order@signalwayantibody.comSupport: tech@signalwayantibody.com

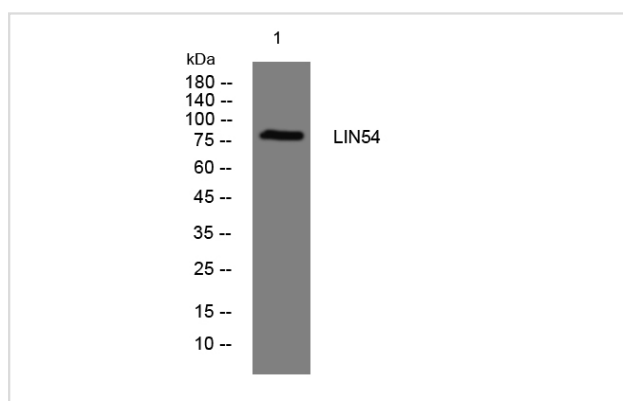
Description

Product Name	LIN54 Antibody
Brief Description	Rabbit Polyclonal
Host Species	Rabbit
Clonality	Polyclonal
Purification	The antibody was affinity-purified from rabbit antiserum by affinity-chromatography using epitope-specific immunogen.
Applications	WB;IHC
Species Reactivity	Human; Mouse; Rat
Specificity	The antibody detects endogenous level of total LIN54 protein
Immunogen Type	Peptide
Immunogen Description	Synthesized peptide derived from human LIN54
Target Name	LIN54; CXCDC1; KIAA2037;
Uniprot	Q6MZIP;
Calculated MW	Predicted band size: 79 kDa
Formulation	Liquid in PBS containing 50% glycerol, 0.5% BSA and 0.02% sodium azide.
Storage	Shipped at 4°C. Store at -20°C for one year. Avoid repeated freeze/thaw cycles.

Application Details

WB 1:500-2000; IHC 1:50-300;

Images



All lanes : LIN54 Antibody at 1/1k dilution

Lane 1 : Hela whole cell lysates

Lysates/proteins at 20 ug per lane.

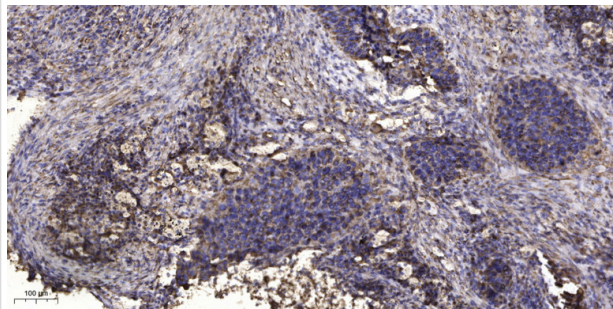
Secondary

All lanes : Goat Anti-Rabbit IgG H&L (HRP) at 1/5000 dilution

Predicted band size: 79 kDa

Observed band size: 82 kDa

Exposure time: 24 seconds



Formalin-fixed, paraffin-embedded human Squamous cell carcinoma of lung stained for LIN54 Antibody was diluted at 1:200 dilution in immunohistochemical analysis.

Note: This product is for in vitro research use only