

FLJ20259 Antibody

Catalog No: #62107

Orders: order@signalwayantibody.comSupport: tech@signalwayantibody.com

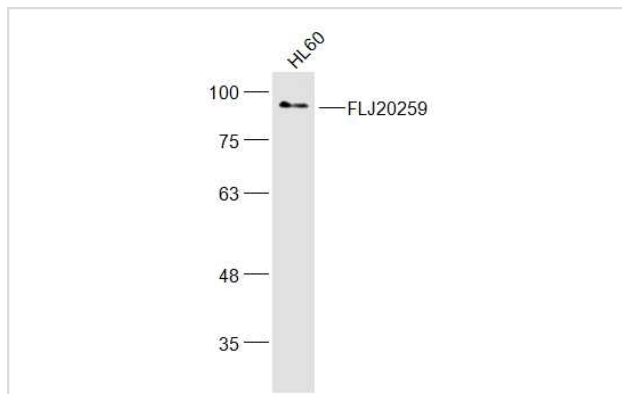
Description

Product Name	FLJ20259 Antibody
Brief Description	Rabbit Polyclonal
Host Species	Rabbit
Clonality	Polyclonal
Purification	affinity purified by Protein A
Applications	WB;IHC;IF
Species Reactivity	Human;Rat
Specificity	The antibody detects endogenous level of total FLJ20259 protein
Immunogen Type	Peptide
Immunogen Description	KLH conjugated synthetic peptide derived from human FLJ20259
Target Name	FLJ20259;
Uniprot	Q2TAL8;
Calculated MW	Predicted band size: 87 kDa
Formulation	0.01M TBS (pH7.4) with 1% BSA, 0.02% Proclin300 and 50% Glycerol.
Storage	Shipped at 4°C. Store at -20°C for one year. Avoid repeated freeze/thaw cycles.

Application Details

WB 1:500-2000;IHC 1:100-500;IF 1:100-500

Images



All lanes : FLJ20259 Antibody at 1/300 dilution

Lane 1 : HL60 whole cell lysates

Lysates/proteins at 20 ug per lane.

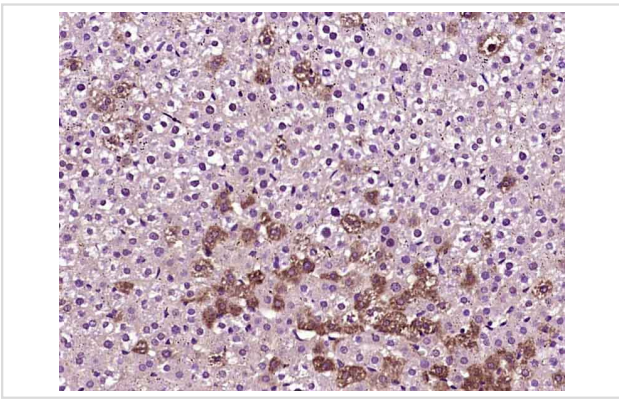
Secondary

All lanes : Goat Anti-Rabbit IgG H&L (HRP) at 1/5000 dilution

Predicted band size: 87 kDa

Observed band size: 87 kDa

Exposure time: 27 seconds



Formalin-fixed, paraffin-embedded Rat liver for FLJ20259
Antibody was diluted at 1:400 dilution in
immunohistochemical analysis.

Note: This product is for in vitro research use only