

DJC13 Antibody

Catalog No: #62204

Orders: order@signalwayantibody.comSupport: tech@signalwayantibody.com

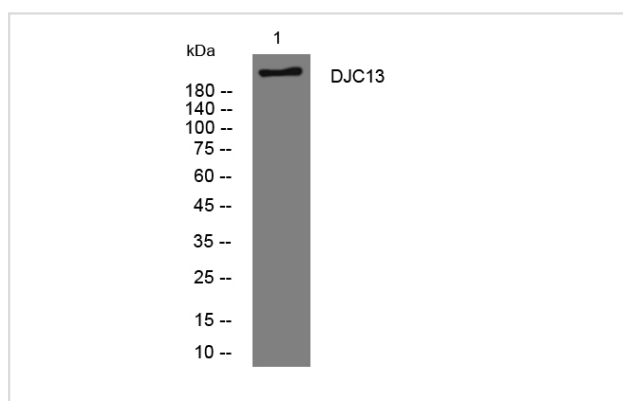
Description

| | |
|-----------------------|---|
| Product Name | DJC13 Antibody |
| Brief Description | Rabbit Polyclonal |
| Host Species | Rabbit |
| Clonality | Polyclonal |
| Purification | The antibody was affinity-purified from rabbit antiserum by affinity-chromatography using epitope-specific immunogen. |
| Applications | WB |
| Species Reactivity | Human |
| Specificity | The antibody detects endogenous level of total DJC13 protein |
| Immunogen Type | Peptide |
| Immunogen Description | Synthesized peptide derived from human DJC13 |
| Target Name | DNAJC13; KIAA0678; RME8; |
| Uniprot | O75165; |
| Calculated MW | Predicted band size: 247 kDa |
| Formulation | Liquid in PBS containing 50% glycerol, 0.5% BSA and 0.02% sodium azide. |
| Storage | Shipped at 4°C. Store at -20°C for one year. Avoid repeated freeze/thaw cycles. |

Application Details

WB 1:500-2000

Images



All lanes : DJC13 Antibody at 1/1k dilution

Lane 1 : HuvEc whole cell lysates

Lysates/proteins at 20 ug per lane.

Secondary

All lanes : Goat Anti-Rabbit IgG H&L (HRP) at 1/5000 dilution

Predicted band size: 247 kDa

Observed band size: 247 kDa

Exposure time: 32 seconds

Note: This product is for in vitro research use only