

Slco1a1 Antibody

Catalog No: #62108



Orders: order@signalwayantibody.com
Support: tech@signalwayantibody.com

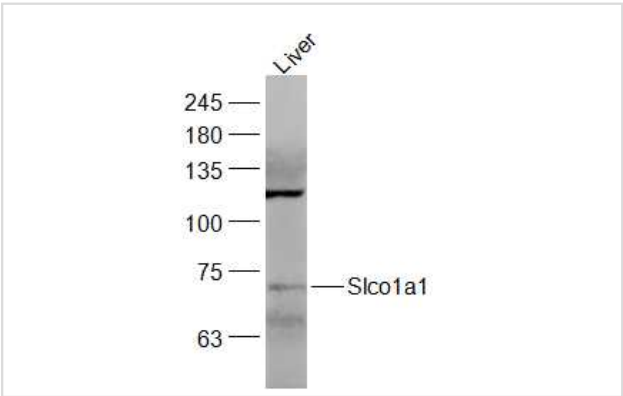
Description

Product Name	Slco1a1 Antibody
Brief Description	Rabbit Polyclonal
Host Species	Rabbit
Clonality	Polyclonal
Purification	affinity purified by Protein A
Applications	WB;IHC;IF
Species Reactivity	Mouse;Rat
Specificity	The antibody detects endogenous level of total Slco1a1 protein
Immunogen Type	Peptide
Immunogen Description	KLH conjugated synthetic peptide derived from rat Slco1a1
Uniprot	P46720;
Calculated MW	Predicted band size: 74 kDa
Formulation	0.01M TBS (pH7.4) with 1% BSA, 0.02% Proclin300 and 50% Glycerol.
Storage	Shipped at 4°C. Store at -20°C for one year. Avoid repeated freeze/thaw cycles.

Application Details

WB 1:500-2000;IHC 1:100-500;IF 1:100-500

Images



All lanes : Slco1a1 Antibody at 1/1k dilution

Lane 1 : Mouse Liver whole cell lysates

Lysates/proteins at 20 ug per lane.

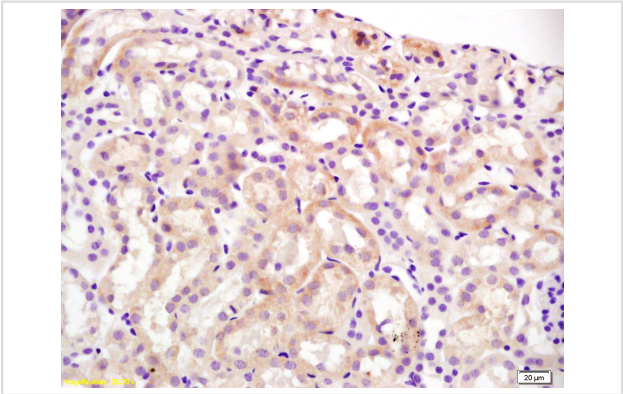
Secondary

All lanes : Goat Anti-Rabbit IgG H&L (HRP) at 1/5000 dilution

Predicted band size: 74 kDa

Observed band size: 73 kDa

Exposure time: 26 seconds



Formalin-fixed, paraffin-embedded mouse kidney for Slco1a1

Antibody was diluted at 1:200 dilution in immunohistochemical analysis.

Note: This product is for in vitro research use only