

Protein A Antibody

Catalog No: #62111

Orders: order@signalwayantibody.comSupport: tech@signalwayantibody.com

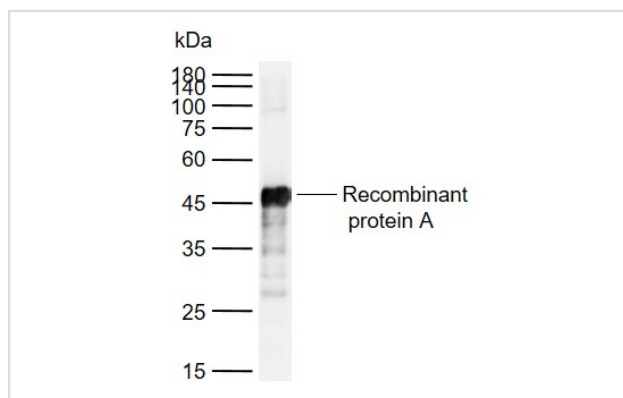
Description

Product Name	Protein A Antibody
Brief Description	Rabbit Polyclonal
Host Species	Rabbit
Clonality	Polyclonal
Purification	affinity purified by Protein A
Applications	WB
Species Reactivity	S.aureus
Specificity	The antibody detects endogenous level of total Protein A protein
Immunogen Description	Recombinant protein A
Calculated MW	Predicted band size: 40-60 kDa
Formulation	0.01M TBS (pH7.4) with 1% BSA, 0.02% Proclin300 and 50% Glycerol.
Storage	Shipped at 4°C. Store at -20°C for one year. Avoid repeated freeze/thaw cycles.

Application Details

WB 1:500-2000

Images



All lanes : Protein A Antibody at 1/1k dilution

Lane 1 : Recombinant protein A

Lysates/proteins at 20 ug per lane.

Secondary

All lanes : Goat Anti-Rabbit IgG H&L (HRP) at 1/5000 dilution

Predicted band size: 40-60 kDa

Observed band size: 41 kDa

Exposure time: 24 seconds

Note: This product is for in vitro research use only