

A Cyclase V/VI Antibody

Catalog No: #62207



Orders: [order@signalwayantibody.com](mailto:order@signalwayantibody.com)  
Support: [tech@signalwayantibody.com](mailto:tech@signalwayantibody.com)

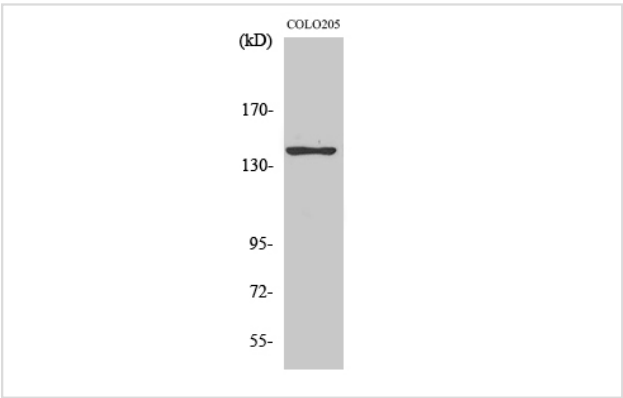
Description

Product Name	A Cyclase V/VI Antibody
Brief Description	Rabbit Polyclonal
Host Species	Rabbit
Clonality	Polyclonal
Purification	The antibody was affinity-purified from rabbit antiserum by affinity-chromatography using epitope-specific immunogen.
Applications	WB;IHC;IF
Species Reactivity	Human; Mouse; Rat
Specificity	The antibody detects endogenous level of total A Cyclase V/VI protein
Immunogen Type	Peptide
Immunogen Description	The antiserum was produced against synthesized peptide derived from human ADCY5/6.
Target Name	ADCY5/ADCY6;
Uniprot	O95622;O43306;
Calculated MW	Predicted band size: 138 kDa
Formulation	Liquid in PBS containing 50% glycerol, 0.5% BSA and 0.02% sodium azide.
Storage	Shipped at 4°C. Store at -20°C for one year. Avoid repeated freeze/thaw cycles.

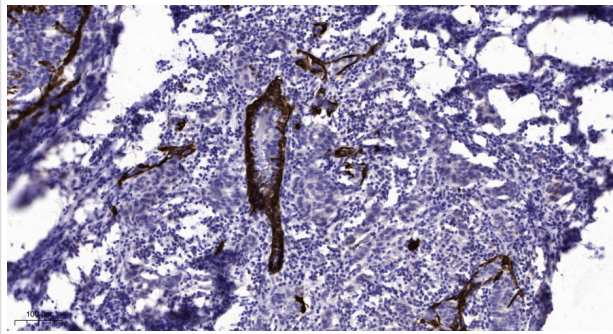
Application Details

WB 1:500-1:2000; IHC 1:100-1:300; IF 1:200-1:1000;

Images



All lanes : A Cyclase V/VI Antibody at 1/1k dilution  
Lane 1 : COLO205 whole cell lysates  
Lysates/proteins at 20 ug per lane.  
Secondary All lanes : Goat Anti-Rabbit IgG H&L (HRP) at 1/5000 dilution  
Predicted band size: 138 kDa  
Observed band size: 138 kDa  
Exposure time: 33 seconds



Formalin-fixed, paraffin-embedded human Breast cancer for A  
Cyclase V/VI Antibody was diluted at 1:200 dilution in  
immunohistochemical analysis.

---

Note: This product is for in vitro research use only