

HCMV pp65 Antibody

Catalog No: #62118

Orders: order@signalwayantibody.comSupport: tech@signalwayantibody.com

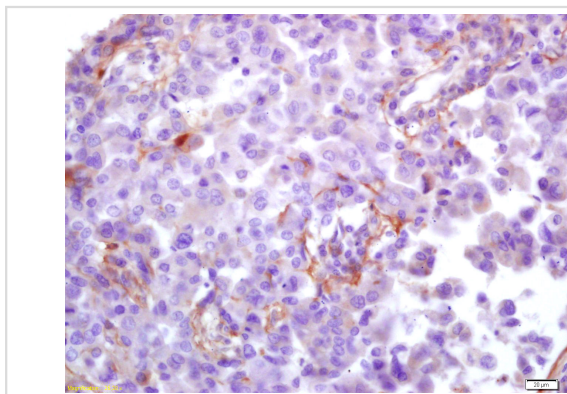
Description

Product Name	HCMV pp65 Antibody
Brief Description	Rabbit Polyclonal
Host Species	Rabbit
Clonality	Polyclonal
Purification	affinity purified by Protein A
Applications	IHC;IF
Species Reactivity	Human (predicted: HCMVPP65)
Specificity	The antibody detects endogenous level of total HCMV pp65 protein
Immunogen Type	Peptide
Immunogen Description	KLH conjugated synthetic peptide derived from HCMV pp65
Formulation	0.01M TBS (pH7.4) with 1% BSA, 0.02% Proclin300 and 50% Glycerol.
Storage	Shipped at 4°C. Store at -20°C for one year. Avoid repeated freeze/thaw cycles.

Application Details

IHC 1:100-500;IF 1:100-500

Images



Formalin-fixed, paraffin-embedded human lung carcinoma for HCMV pp65 Antibody was diluted at 1:200 dilution in immunohistochemical analysis.

Note: This product is for in vitro research use only