

PROM2 Antibody

Catalog No: #62167

Orders: order@signalwayantibody.comSupport: tech@signalwayantibody.com

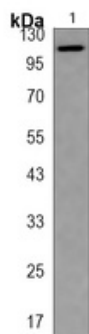
Description

Product Name	PROM2 Antibody
Brief Description	Rabbit Polyclonal
Host Species	Rabbit
Clonality	Polyclonal
Purification	The antibody was purified by immunogen affinity chromatography.
Applications	WB
Species Reactivity	Human
Specificity	The antibody detects endogenous level of total PROM2 protein.
Immunogen Type	Peptide
Immunogen Description	KLH-conjugated synthetic peptide encompassing a sequence within the Central region of human PROM2. The exact sequence is proprietary.
Conjugates	Unconjugated
Target Name	PROM2
Uniprot	Q8N271
GeneID	150696
Calculated MW	108kDa
Concentration	1mg/ml
Formulation	Liquid in 0.42% Potassium phosphate, 0.87% Sodium chloride, pH 7.3, 30% glycerol, and 0.01% sodium azide.
Storage	Shipped at 4°C. Store at -20°C for one year. Avoid repeated freeze/thaw cycles.

Application Details

WB 1:500-1:1000

Images



All lanes : PROM2 Antibody at 1/500 dilution
Lane 1 :
NCIH292 whole cell lysates
Lysates/proteins at 20 ug per lane.
Secondary All lanes : Goat Anti-Rabbit IgG H&L (HRP) at 1/20000 dilution
Predicted band size: 91 kDa Observed band size: 108 kDa
Exposure time: 2 seconds

Note: This product is for in vitro research use only