

GPR35 Antibody

Catalog No: #62090



Orders: [order@signalwayantibody.com](mailto:order@signalwayantibody.com)  
Support: [tech@signalwayantibody.com](mailto:tech@signalwayantibody.com)

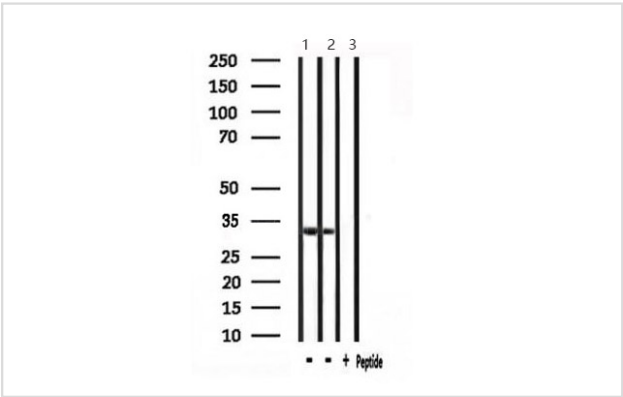
Description

Product Name	GPR35 Antibody
Brief Description	Rabbit Polyclonal
Host Species	Rabbit
Clonality	Polyclonal
Purification	The antiserum was purified by peptide affinity chromatography using SulfoLink <sup>®</sup> Coupling Resin (Thermo Fisher Scientific).
Applications	WB;IHC;IF
Species Reactivity	Human
Specificity	GPR35 Antibody detects endogenous levels of total GPR35.
Immunogen Type	Peptide
Immunogen Description	Synthesized peptide derived from human GPR35
Conjugates	Unconjugated
Target Name	GPR35
Uniprot	Q9HC97
GeneID	2859
Calculated MW	34kDa
Concentration	1mg/ml
Formulation	Rabbit IgG in phosphate buffered saline , pH 7.4, 150mM NaCl, 0.02% sodium azide and 50% glycerol.
Storage	Shipped at 4°C. Store at -20°C for one year. Avoid repeated freeze/thaw cycles.

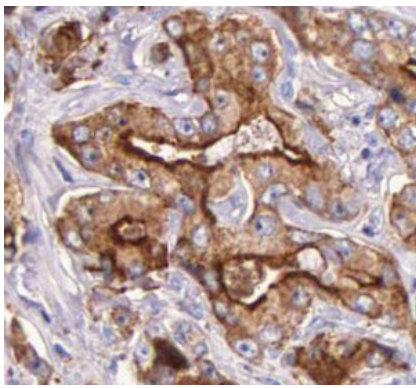
Application Details

WB 1:500-1:1000, IHC 1:50-1:200, IF/ICC 1:100-1:500

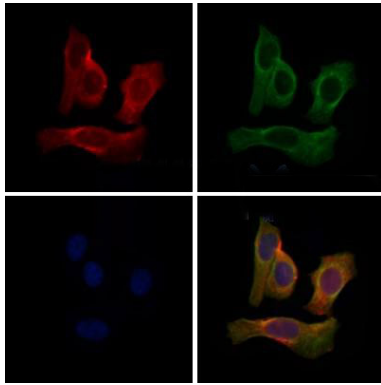
Images



All lanes : GPR35 Antibody at 1/1K dilution  
Lane 1 : 293 whole cell lysates  
Lane 2 : HepG2 whole cell lysates  
Lane 3 : treated with blocking peptide  
Lysates/proteins at 20 ug per lane.  
Secondary All lanes : Goat Anti-Rabbit IgG H&L (HRP) at 1/20000 dilution  
Predicted band size: 34 kDa  
Observed band size: 34 kDa  
Exposure time: 2 seconds



Formalin-fixed, paraffin-embedded human Prostate tissue stained for GPR35 at 1/100 dilution in immunohistochemical analysis.



Immunocytochemistry/Immunofluorescence-GPR35 antibody staining GPR35

antibody in HeLa cells. The cells were fixed with 4% paraformaldehyde permeabilized with 0.1% Triton X-100.

The cells were incubated overnight at 4°C with antibody

at a working dilution of 1/200 and Mouse monoclonal to alpha Tubulin - Loading Control. Cells were incubated with Goat polyclonal Secondary Antibody to Rabbit IgG - H&L (Alexa Fluor 594), pre-adsorbed at 1/1000 dilution (shown in red) and Goat polyclonal Secondary Antibody to Mouse IgG - H&L (Alexa Fluor 488), pre-adsorbed at 1/1000 dilution (shown in pseudocolour green). Nuclear DNA was labelled with DAPI (shown in blue).

## Background

G-protein coupled receptor that binds to several ligands including the tryptophan metabolite kynurenic acid (KYNA), lysophosphatidic acid (LPA) or 5-hydroxyindoleacetic acid (5-HIAA) with high affinity, leading to rapid and transient activation of numerous intracellular signaling pathways (PubMed:16754668, PubMed:20361937, PubMed:35148838). Plays a role in neutrophil recruitment to sites of inflammation and bacterial clearance through the major serotonin metabolite 5-HIAA that acts as a physiological ligand (PubMed:35148838). Stimulates lipid metabolism, thermogenic, and anti-inflammatory gene expression in adipose tissue once activated by kynurenic acid (By similarity). In macrophages, activation by lysophosphatidic acid promotes GPR35-induced signaling with a distinct transcriptional profile characterized by TNF production associated with ERK and NF-kappa-B activation. In turn, induces chemotaxis of macrophages (By similarity).

Note: This product is for in vitro research use only