

Bestrophin 4 Antibody

Catalog No: #62127

Orders: order@signalwayantibody.comSupport: tech@signalwayantibody.com

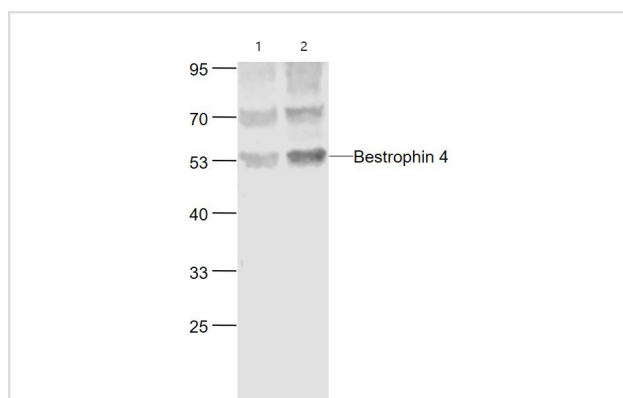
Description

Product Name	Bestrophin 4 Antibody
Brief Description	Rabbit Polyclonal
Host Species	Rabbit
Clonality	Polyclonal
Purification	affinity purified by Protein A
Applications	WB
Species Reactivity	Human
Specificity	The antibody detects endogenous level of total Bestrophin 4 protein.
Immunogen Type	Peptide
Immunogen Description	KLH conjugated synthetic peptide derived from human Bestrophin 4: 151-250/473
Conjugates	Unconjugated
Target Name	BEST4
Uniprot	Q8NFU0
GeneID	266675
Calculated MW	53kDa
Concentration	1mg/ml
Formulation	0.01M TBS (pH7.4) with 1% BSA, 0.02% Proclin300 and 50% Glycerol.
Storage	Shipped at 4°C. Store at -20°C for one year. Avoid repeated freeze/thaw cycles.

Application Details

WB 1:500-2000

Images



All lanes : Bestrophin 4 Antibody at 1/1K dilution
 Lane 1 : HepG2 whole cell lysates
 Lane 2 : Hela whole cell lysates
 Lysates/proteins at 30 ug per lane.
 Secondary All lanes : Goat Anti-Rabbit IgG H&L (HRP) at 1/20000 dilution
 Predicted band size: 53 kDa Observed band size: 53 kDa
 Exposure time: 10 seconds

Background

Bestrophin-4 is a 473 amino acid member of the Bestrophin family of proteins. Members of the Bestrophin family are transmembrane proteins that contain a high percentage of aromatic residues, a conserved RFP (Arg-Phe-Pro) motif and they function as anion channels. Bestrophin-4 acts as a

calcium-sensitive chloride channel located in the cell membrane. It is believed that Bestrophin-4 also acts as a channel for other physiologically significant anions, such as bicarbonate. Bestrophin-4 is predominantly expressed in the colon, but can be found at low levels in testis, placenta, trachea, spinal chord, lung and retina.

Note: This product is for in vitro research use only