

S36A1 Antibody

Catalog No: #62218

Orders: order@signalwayantibody.comSupport: tech@signalwayantibody.com

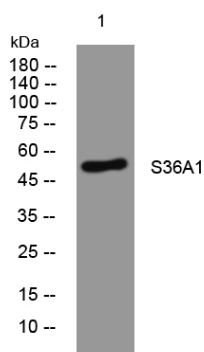
Description

Product Name	S36A1 Antibody
Brief Description	Rabbit Polyclonal
Host Species	Rabbit
Clonality	Polyclonal
Purification	The antibody was affinity-purified from rabbit antiserum by affinity-chromatography using epitope-specific immunogen.
Applications	WB
Species Reactivity	Human, Mouse, Rat
Specificity	The antibody detects endogenous level of total S36A1 protein.
Immunogen Type	Peptide
Immunogen Description	Synthesized peptide derived from human S36A1 AA range: 176-226
Conjugates	Unconjugated.
Target Name	S36A1
Uniprot	Q7Z2H8
GeneID	206358
Calculated MW	52kD
Concentration	1mg/ml
Formulation	Rabbit IgG in phosphate buffered saline , pH 7.4, 150mM NaCl, 0.02% sodium azide and 50% glycerol.
Storage	Shipped at 4°C. Store at -20°C for one year. Avoid repeated freeze/thaw cycles.

Application Details

WB 1:500-2000

Images



All lanes : S36A1 Antibody at 1/1k dilution

Lane 1 : 293T whole cell lysates

Lysates/proteins at 20 ug per lane.

Secondary

All lanes : Goat Anti-Rabbit IgG H&L (HRP) at 1/20000 dilution

Predicted band size: 52 kDa

Observed band size: 52 kDa

Exposure time: 8 seconds

Note: This product is for in vitro research use only