

## PALM3 Antibody

Catalog No: #62128

Orders: [order@signalwayantibody.com](mailto:order@signalwayantibody.com)Support: [tech@signalwayantibody.com](mailto:tech@signalwayantibody.com)

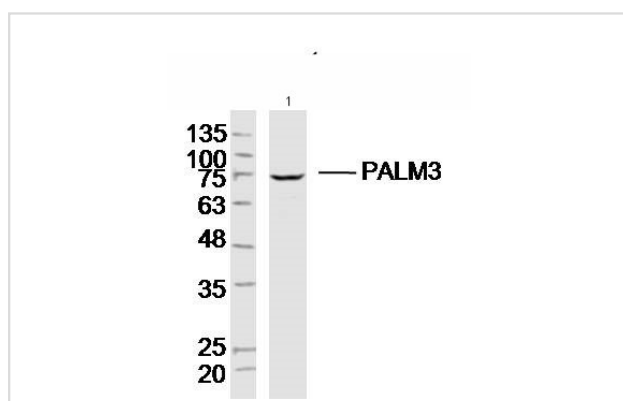
## Description

Product Name	PALM3 Antibody
Brief Description	Rabbit Polyclonal
Host Species	Rabbit
Clonality	Polyclonal
Purification	affinity purified by Protein A
Applications	WB
Species Reactivity	Human
Specificity	The antibody detects endogenous level of total PALM3 protein.
Immunogen Type	Peptide
Immunogen Description	KLH conjugated synthetic peptide derived from human PALM3: 1-100/673
Conjugates	Unconjugated.
Target Name	PALM3
Calculated MW	72kD(Calculated)
Concentration	1mg/ml
Formulation	Preservative: 0.02% Proclin300, Constituents: 1% BSA, 0.01M PBS, pH7.4.
Storage	Shipped at 4°C. Store at -20°C for one year. Avoid repeated freeze/thaw cycles.

## Application Details

WB 1:500-2000

## Images



All lanes : PALM3 Antibody at 1/300 dilution  
 Lane 1 : 293T whole cell lysates  
 Lysates/proteins at 20 ug per lane.  
 Secondary  
 All lanes : Goat Anti-Rabbit IgG H&L (HRP) at 1/20000 dilution  
 Predicted band size: 72 kDa  
 Observed band size: 72 kDa  
 Exposure time: 9 seconds

Note: This product is for in vitro research use only