

FAM26F Antibody

Catalog No: #62169

Orders: order@signalwayantibody.comSupport: tech@signalwayantibody.com

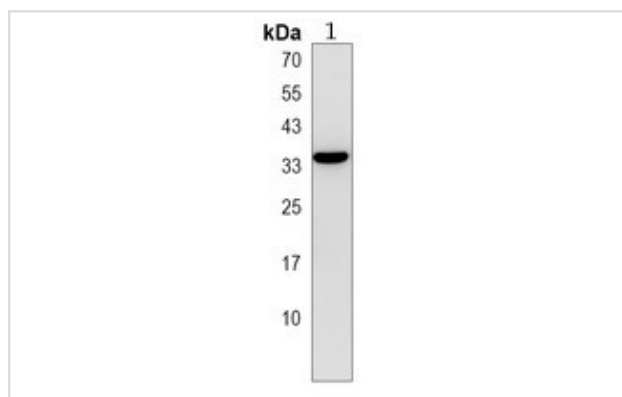
Description

Product Name	FAM26F Antibody
Brief Description	Rabbit Polyclonal
Host Species	Rabbit
Clonality	Polyclonal
Purification	The antibody was affinity-purified from rabbit antiserum by affinity-chromatography using epitope-specific immunogen
Applications	WB
Species Reactivity	Human
Specificity	The antibody detects endogenous level of total FAM26F protein.
Immunogen Type	Peptide
Immunogen Description	KLH-conjugated synthetic peptide encompassing a sequence within the C-terminal region of human FAM26F. The exact sequence is proprietary
Conjugates	Unconjugated.
Target Name	FAM26F
Uniprot	Q5R3K3
GeneID	441168
Calculated MW	34kD
Concentration	1mg/ml
Formulation	Liquid in 0.42% Potassium phosphate, 0.87% Sodium chloride, pH 7.3, 30% glycerol, and 0.01% sodium azide.
Storage	Shipped at 4°C. Store at -20°C for one year. Avoid repeated freeze/thaw cycles.

Application Details

WB 1:500-1000

Images



All lanes : FAM26F Antibody at 1/1k dilution
Lane 1 : NCIH460 whole cell lysates
Lysates/proteins at 20 ug per lane.
Secondary
All lanes : Goat Anti-Rabbit IgG H&L (HRP) at 1/20000 dilution
Predicted band size: 34 kDa
Observed band size: 34 kDa
Exposure time: 11 seconds

Note: This product is for in vitro research use only