

ATM(Phospho-Ser794) Antibody

Catalog No: #62091

Orders: order@signalwayantibody.comSupport: tech@signalwayantibody.com

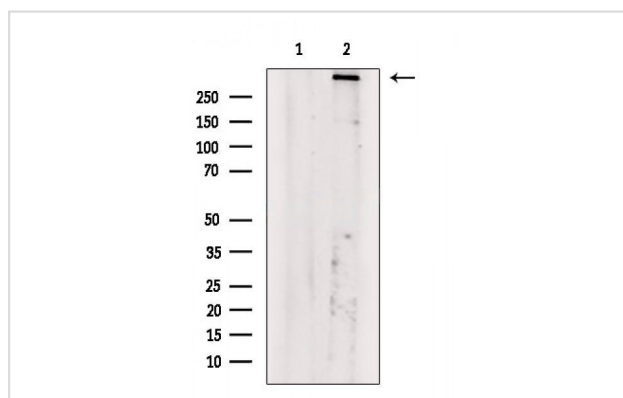
Description

Product Name	ATM(Phospho-Ser794) Antibody
Brief Description	Rabbit Polyclonal
Host Species	Rabbit
Clonality	Polyclonal
Purification	The antibody is from purified rabbit serum by affinity purification via sequential chromatography on phospho-peptide and non-phospho-peptide affinity columns.
Applications	WB
Species Reactivity	Human
Specificity	The antibody detects endogenous level of ATM only when phosphorylated at Ser794
Immunogen Type	Peptide
Immunogen Description	Peptide sequence around phosphorylation site of Ser794 (K-K-S(p)-P-N) derived from Human ATM.
Conjugates	Unconjugated.
Target Name	ATM
Uniprot	Q13315
GeneID	472
Calculated MW	350kd; 351kD(Calculated).
Concentration	1mg/ml
Formulation	Rabbit IgG in phosphate buffered saline , pH 7.4, 150mM NaCl, 0.02% sodium azide and 50% glycerol.
Storage	Shipped at 4°C. Store at -20°C for one year. Avoid repeated freeze/thaw cycles.

Application Details

WB 1:1000-3000

Images



All lanes : ATM(Phospho-Ser794) Antibody at 1/1k dilution

Lane 1 :treated with blocking peptide

Lane 2 :HepG2 whole cell (heat shock treatment)lysates

Lysates/proteins at 20 ug per lane.

Secondary

All lanes : Goat Anti-Rabbit IgG H&L (HRP) at 1/20000 dilution

Predicted band size: 350 kDa

Observed band size: 350 kDa

Exposure time: 12 seconds

Note: This product is for in vitro research use only