

SYF2 antibody

Catalog No: #62227

Orders: order@signalwayantibody.comSupport: tech@signalwayantibody.com

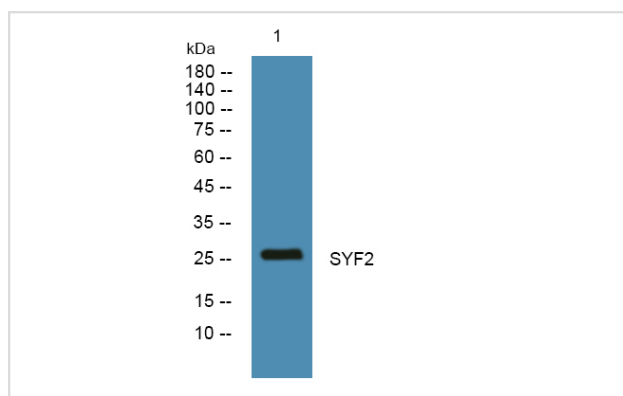
Description

Product Name	SYF2 antibody
Brief Description	Rabbit Polyclonal
Host Species	Rabbit
Clonality	Polyclonal
Purification	The antibody was affinity-purified from rabbit antiserum by affinity-chromatography using epitope-specific immunogen.
Applications	WB, ELISA
Species Reactivity	Human, Mouse, Rat
Specificity	This antibody detects endogenous levels of human SYF2.
Immunogen Type	Peptide
Immunogen Description	Peptide sequence around aa.160-240 derived from human SYF2.
Target Name	SYF2
Uniprot	O95926
GeneID	25949
Calculated MW	26kDa
Concentration	1mg/ml
Formulation	Liquid in PBS containing 50% glycerol, 0.5% BSA and 0.02% sodium azide.
Storage	Store at +4°C for short term. Store at -20°C for long term. Avoid freeze/thaw cycle.

Application Details

WB 1:1000

Images



All lanes: SYF2 antibody at 1/1k dilution

Lane 1: PC12 whole cell lysates

Lysates/proteins at 20 ug per lane.

Secondary

All lanes: Goat Anti-Rabbit IgG H&L (HRP) at 1/20000 dilution

Observed band size: 61 kDa

Exposure time: 7 seconds

Background

This gene encodes a nuclear protein that interacts with cyclin D-type binding-protein 1, which is thought to be a cell cycle regulator at the G1/S transition. Alternate transcriptional splice variants, encoding different isoforms, have been characterized. [provided by RefSeq, Jul 2008]

Note: This product is for in vitro research use only