

GluR2 (Phospho-Ser880) antibody

Catalog No: #62096

Orders: order@signalwayantibody.comSupport: tech@signalwayantibody.com

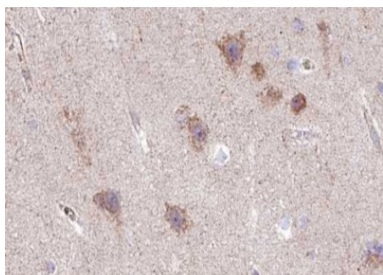
Description

Product Name	GluR2 (Phospho-Ser880) antibody
Brief Description	Rabbit Polyclonal
Host Species	Rabbit
Clonality	Polyclonal
Purification	The antibody was affinity-purified from rabbit antiserum by affinity-chromatography using phospho-peptide and non-phospho-peptide.
Applications	WB, IHC
Species Reactivity	Human, Mouse, Rat
Specificity	This antibody detects endogenous levels of human GluR2 when phosphorylated at serine 880.
Immunogen Type	Peptide
Immunogen Description	peptide derived from GRIA2, corresponding to amino acid residues around phosphorylated Ser880.
Target Name	GluR2
Uniprot	P42262
GeneID	2891
Calculated MW	99kDa
Formulation	Liquid in PBS containing 50% glycerol, 0.5% BSA and 0.02% sodium azide.
Storage	Store at +4°C for short term. Store at -20°C for long term. Avoid freeze/thaw cycle.

Application Details

WB 1:500-1:2000, IHC 1:50-1:200

Images



Formalin-fixed, paraffin-embedded human brain tissue stained for Phospho-GluR2 (S880) at 1/100 dilution in immunohistochemical analysis.

Background

GluR2 is an integral membrane protein belonging to the glutamate-gated ion channel family. L-glutamate (Glu) acts as an excitatory neurotransmitter at many synapses in the central nervous system. Glutamate receptors are heteromeric protein complexes with multiple subunits, each possessing transmembrane regions, and all arranged to form a ligand-gated ion channel. The postsynaptic actions of Glu are mediated by a variety of receptors that are named according to their selective agonists.

Note: This product is for in vitro research use only