

LRRC25 antibody

Catalog No: #62144

Orders: order@signalwayantibody.comSupport: tech@signalwayantibody.com

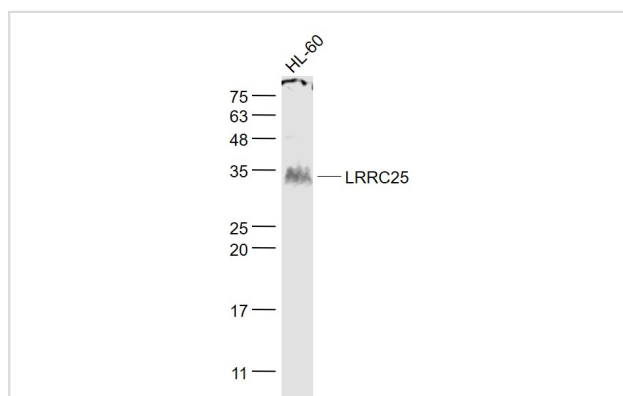
Description

Product Name	LRRC25 antibody
Brief Description	Rabbit Polyclonal
Host Species	Rabbit
Clonality	Polyclonal
Purification	The antibody was affinity purified by Protein A.
Applications	WB
Species Reactivity	Human
Specificity	This antibody detects endogenous levels of human LRRC25.
Immunogen Type	Peptide
Immunogen Description	peptide derived from human LRRC25: 81-180/305
Target Name	LRRC25
Uniprot	Q8N386
GeneID	126364
Calculated MW	31 kDa
Concentration	1mg/ml
Formulation	Liquid in 0.01M TBS (pH7.4) with 1% BSA, 0.02% Proclin300 and 50% Glycerol.
Storage	Store at +4°C for short term. Store at -20°C for long term. Avoid freeze/thaw cycle.

Application Details

WB 1:500-2000

Images



All lanes : LRRC25 antibody at 1/1k dilution

Lane 1: HL-60 whole cell lysates

Lysates/proteins at 30 ug per lane.

Secondary

All lanes : IRDye800CW Goat Anti-Rabbit IgG at 1/20000 dilution

Predicted band size: 31 kDa

Observed band size: 31 kDa

Exposure time: 6 seconds

Background

LRRC25 is a 305 amino acid protein that contains two LRR repeats. LRRC25 is a single-pass type I membrane protein that is expressed in monocyte-derived dendritic cells (MDDC), granulocytes, monocytes, plasmacytoid dendritic cells (PDC), B-lymphocytes, peripheral blood leukocytes, spleen and bone marrow, with lower levels in lymph nodes, fetal liver, and appendix. LRRC25 may play a role in the activation of cells of innate and acquired immunity.

Note: This product is for in vitro research use only