

## ZBTB7A Antibody

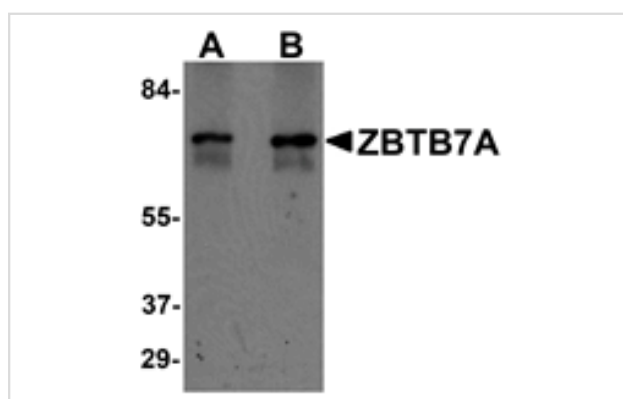
Catalog No: #25246

Orders: [order@signalwayantibody.com](mailto:order@signalwayantibody.com)Support: [tech@signalwayantibody.com](mailto:tech@signalwayantibody.com)

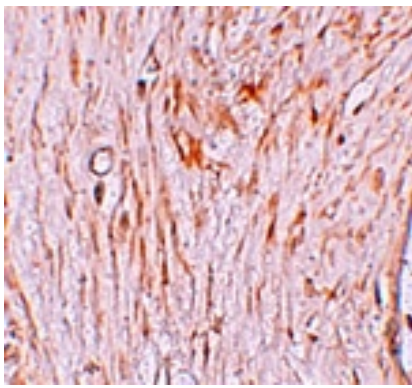
## Description

Product Name	ZBTB7A Antibody
Host Species	Rabbit
Clonality	Polyclonal
Purification	Affinity chromatography purified via peptide column
Applications	ELISA WB IHC
Species Reactivity	Hu Ms
Specificity	At least two isoforms of ZBTB7A are known to exist; this antibody will recognize both isoforms. This antibody is predicted to not cross-react with other ZBTB protein family members.
Immunogen Type	Peptide
Immunogen Description	Raised against a 16 amino acid peptide near the amino terminus of human ZBTB7A.
Target Name	ZBTB7A
Other Names	Zinc finger and BTB domain-containing protein 7A, ZBTB7, LRF, FBI1, FBI-1, ZNF857A, pokemon
Accession No.	Swiss-Prot:O95365Gene ID:51341
Uniprot	O95365
GeneID	51341;
Concentration	1mg/ml
Formulation	Supplied in PBS containing 0.02% sodium azide.
Storage	Can be stored at -20°C, stable for one year. As with all antibodies care should be taken to avoid repeated freeze thaw cycles. Antibodies should not be exposed to prolonged high temperatures.

## Images



Western blot analysis of ZBTB7A in human ovary tissue lysate with ZBTB7A antibody at (A) 1 and (B) 2 ug/mL.



Immunohistochemistry of ZBTB7A in human ovary tissue with ZBTB7A antibody at 2.5 ug/mL.

## Background

The ZBTB family of proteins is comprised of diverse zinc finger proteins that also contain a BTB (BR-C, ttk and bab) domain. ZBTB7A, also known as LRF, was initially identified as a potential target of the LAZ-3/BCL-6 oncogene. Later reports demonstrated that it could bind to the wild-type IST (inducer of short transcripts) elements of HIV-1 long terminal repeats (LTRs) and stimulate Tat activity on the HIV-1 LTR. More recently it ZBTB7A has been recognized as a proto-oncogene whose overexpression contributes to malignancy in breast cancer and functions as a co-repressor of the androgen receptor in prostate cancer cells.

Note: This product is for in vitro research use only