

ROD1 antibody

Catalog No: #62232

Orders: order@signalwayantibody.comSupport: tech@signalwayantibody.com

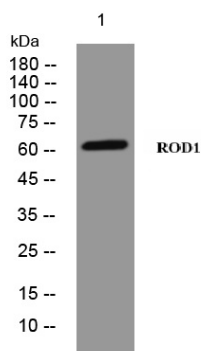
Description

Product Name	ROD1 antibody
Brief Description	Rabbit Polyclonal
Host Species	Rabbit
Clonality	Polyclonal
Purification	The antibody was affinity-purified from rabbit antiserum by affinity-chromatography using epitope-specific immunogen.
Applications	WB
Species Reactivity	Human, Mouse, Rat
Specificity	This antibody detects endogenous levels of ROD1.
Immunogen Description	Synthesized peptide derived from human ROD1 AA range: 103-153
Target Name	ROD1
Uniprot	O95758
GeneID	9991
Calculated MW	61kD
Concentration	1 mg/ml
Formulation	Liquid in PBS containing 50% glycerol, 0.5% BSA and 0.02% sodium azide.
Storage	Shipped at 4°C. Store at -20°C for one year. Avoid repeated freeze/thaw cycles.

Application Details

WB 1:500-2000

Images



Western blot analysis of SW480 whole cells lysate using ROD1 antibody at 1:1000.

Background

The protein encoded by this gene binds RNA and is a regulator of cell differentiation. The encoded protein preferentially binds to poly(G) and poly(U) sequences in vitro. Several transcript variants encoding different isoforms have been found for this gene. [provided by RefSeq, Oct 2011],

Note: This product is for in vitro research use only