

Sumo 3 antibody

Catalog No: #62100

Orders: order@signalwayantibody.comSupport: tech@signalwayantibody.com

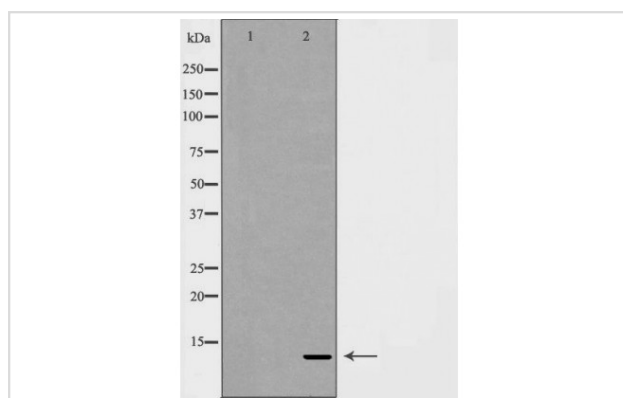
Description

Product Name	Sumo 3 antibody
Brief Description	Rabbit Polyclonal
Host Species	Rabbit
Clonality	Polyclonal
Purification	The antibody was affinity-purified from rabbit antiserum by affinity-chromatography using epitope-specific immunogen.
Applications	WB IHC
Species Reactivity	Human, Mouse, Rat
Specificity	SUMO3 Antibody detects endogenous levels of total SUMO3.
Immunogen Description	A synthesized peptide derived from human SUMO3(Accession P55854), corresponding to amino acid residues P72-F103.
Target Name	SUMO3
Uniprot	P55854
GeneID	6612
Calculated MW	12KD
Concentration	1mg/ml
Formulation	Rabbit IgG in phosphate buffered saline , pH 7.4, 150mM NaCl, 0.02% sodium azide and 50% glycerol.
Storage	Shipped at 4°C. Store at -20°C for one year. Avoid repeated freeze/thaw cycles.

Application Details

WB 1:1000-1:2000, IHC 1:100-1:300

Images



Western blot analysis of extracts from MCF7 using SUMO3 antibody.

1. MCF7 cell lysate treated with the antigen-specific peptide.
2. MCF7 cell lysate

Background

Small ubiquitin-related modifier 1, 2 and 3 (SUMO-1, -2 and -3) are members of the ubiquitin-like protein family . The covalent attachment of

the SUMO-1, -2 or -3 (SUMOylation) to target proteins is analogous to ubiquitination. This post-translational modification is a reversible, multi step process that is initiated by cleaving a precursor protein to a mature protein. Mature SUMO-1, -2 or -3 is then linked to the activating enzyme E1, conjugated to E2 and in conjunction with E3, SUMO-1, -2 or -3 is ligated to the target protein . Ubiquitin and the individual SUMO family members are all targeted to different proteins with diverse biological functions. Ubiquitin predominantly regulates degradation of its target .

Note: This product is for in vitro research use only