

Matriptase 2 antibody

Catalog No: #62150

Orders: order@signalwayantibody.comSupport: tech@signalwayantibody.com

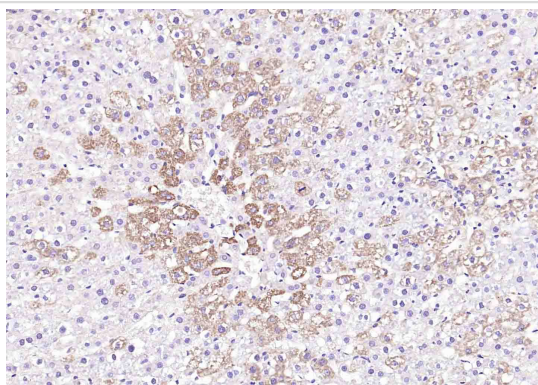
Description

| | |
|-----------------------|---|
| Product Name | Matriptase 2 antibody |
| Brief Description | Rabbit Polyclonal |
| Host Species | Rabbit |
| Clonality | Polyclonal |
| Purification | affinity purified by Protein A |
| Applications | IHC, IF |
| Species Reactivity | Rat Human, Mouse |
| Immunogen Description | KLH conjugated synthetic peptide derived from human Matriptase 2: 711-811/811 |
| Target Name | Matriptase2 |
| Uniprot | Q8IU80 |
| GeneID | 164656 |
| Calculated MW | 89 kDa |
| Concentration | 1mg/ml |
| Formulation | 0.01M TBS (pH7.4) with 1% BSA, 0.02% Proclin300 and 50% Glycerol. |
| Storage | Shipped at 4°C. Store at -20°C for one year. Avoid repeated freeze/thaw cycles. |

Application Details

IHC-P 1:100-500, IHC-F 1:100-500, IF □1:100-500

Images



Immunohistochemical analysis of paraffin-embedded rat liver with Matriptase 2 antibody at 1:200.

Background

The protein encoded by this gene is an epithelial-derived, integral membrane serine protease. This protease forms a complex with the Kunitz-type serine protease inhibitor, HAI-1, and is found to be activated by sphingosine 1-phosphate. This protease has been shown to cleave and activate hepatocyte growth factor/scattering factor, and urokinase plasminogen activator, which suggest the function of this protease as an epithelial membrane activator for other proteases and latent growth factors. The expression of this protease has been associated with breast, colon, prostate, and ovarian tumors, which implicates its role in cancer invasion, and metastasis.

Note: This product is for in vitro research use only