

EpCAM Rabbit mAb

Catalog No: #62249

Package Size: #62249-1 100ul

Orders: order@signalwayantibody.comSupport: tech@signalwayantibody.com

Description

Product Name	EpCAM Rabbit mAb
Host Species	Rabbit
Clonality	Monoclonal
Clone No.	SR4555
Purification	Protein A affinity purified.
Applications	IHC;IF;FC
Species Reactivity	Human
Immunogen Type	Peptide
Immunogen Description	Synthetic peptide.
Conjugates	unconjugated
Target Name	CD326
Uniprot	P16422
Calculated MW	35 kDa
Concentration	1ug/ul
Formulation	PBS (pH7.4), 0.1% BSA, 40% Glycerol. Preservative: 0.05% Sodium Azide.
Storage	Store at +4°C after thawing. Aliquot store at -20°C. Avoid repeated freeze / thaw cycles.

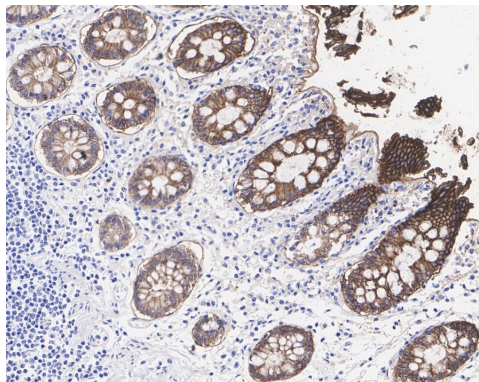
Application Details

IHC 1:200;

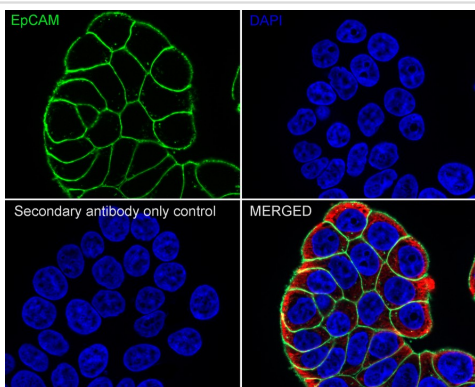
IF 1:100;

FC 1:500-1:1000;

Images

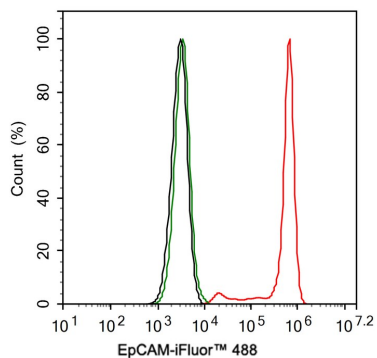


Immunohistochemical analysis of paraffin-embedded human colon tissue with EpCAM at 1/200 dilution. The section was pre-treated using heat mediated antigen retrieval with Tris-EDTA buffer (pH 9.0) for 20 minutes. The tissues were blocked in 1% BSA for 20 minutes at room temperature, washed with ddH₂O and PBS, and then probed with the primary antibody at 1/200 dilution for 1 hour at room temperature. The detection was performed using an HRP conjugated compact polymer system. DAB was used as the chromogen. Tissues were counterstained with hematoxylin and mounted with DPX.



Immunocytochemistry analysis of HT-29 cells labeling EpCAM at 1/100 dilution.

Cells were fixed in 4% paraformaldehyde for 15 minutes at room temperature, permeabilized with 0.1% Triton X-100 in PBS for 15 minutes at room temperature, then blocked with 1% BSA in 10% negative goat serum for 1 hour at room temperature. Cells were then incubated with EpCAM at 1/100 dilution in 1% BSA in PBST overnight at 4°C. Goat Anti-Rabbit IgG H&L (iFluor 488) was used as the secondary antibody at 1/1,000 dilution. PBS instead of the primary antibody was used as the secondary antibody only control. Nuclear DNA was labelled in blue with DAPI.



Flow cytometric analysis of HT-29 cells labeling EpCAM.

Cells were washed twice with cold PBS and resuspend. Then stained with the primary antibody (1ug/ml) (red) compared with Rabbit IgG Isotype Control (green). After incubation of the primary antibody at +4°C for an hour, the cells were stained with a iFluor 488 conjugate-Goat anti-Rabbit IgG Secondary antibody at 1/1,000 dilution for 30 minutes at +4°C. Unlabelled sample was used as a control (cells without incubation with primary antibody; black).

Note: This product is for in vitro research use only