

CD20 Rabbit mAb

Catalog No: #C92941



Package Size: #C92941-1 100ul

Orders: order@signalwayantibody.com
Support: tech@signalwayantibody.com

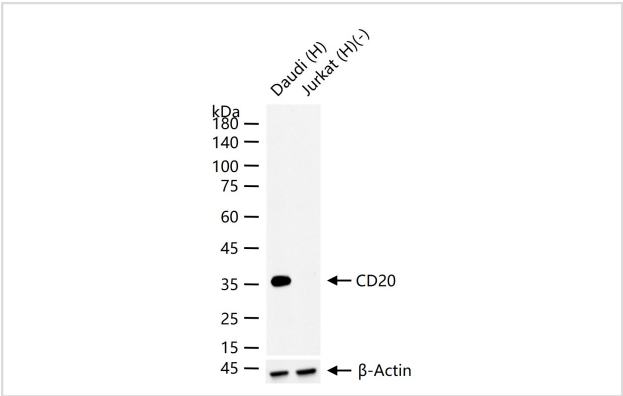
Description

Product Name	CD20 Rabbit mAb
Host Species	Rabbit
Clonality	Monoclonal
Clone No.	SR4566
Purification	affinity purified by Protein A
Applications	WB;IHC;IF;FC
Species Reactivity	Human
Immunogen Type	Peptide
Immunogen Description	A synthesized peptide derived from human CD20
Conjugates	unconjugated
Target Name	CD20
Uniprot	P11836
Calculated MW	Predicted band size: 33 kDa
Concentration	1mg/ml
Formulation	0.01M TBS (pH7.4) with 1% BSA, 0.02% Proclin300 and 50% Glycerol.
Storage	Shipped at 4°C. Store at -20°C for one year. Avoid repeated freeze/thaw cycles.

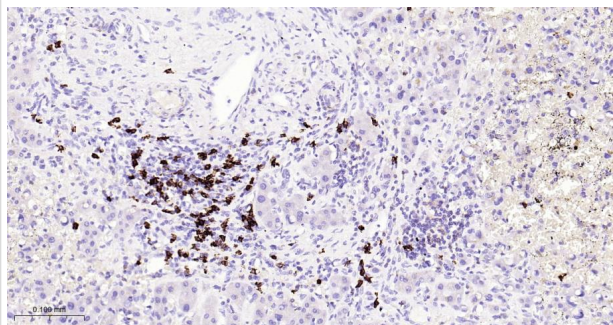
Application Details

WB 1:500-1:2000;
IHC 1:100-1:500;
IF 1:50-1:200;
FC 1:50-1:100;

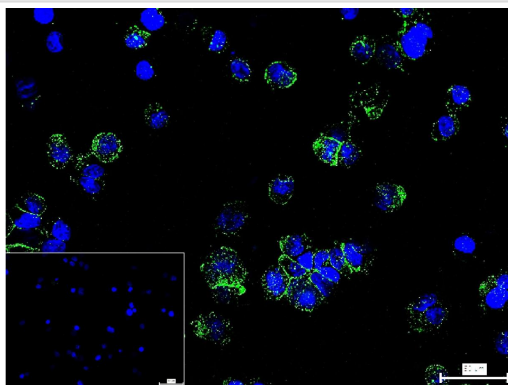
Images



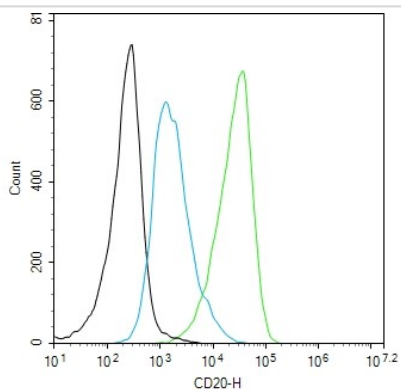
25 ug total protein per lane of various lysates (see on figure) probed with CD20 unconjugated at 1:1000 dilution and 4°C overnight incubation. Followed by conjugated secondary antibody incubation at r.t. for 60 min.



Paraformaldehyde-fixed, paraffin embedded Human Liver Cancer; Antigen retrieval by boiling in sodium citrate buffer (pH6.0) for 15 min; Antibody incubation with CD20 Unconjugated at 1:200 overnight at 4°C



4% Paraformaldehyde-fixed Raji (H) cell; Antibody incubation with CD20 unconjugated 1:100, 90 min at 37°C; followed by conjugated Goat Anti-Rabbit IgG antibody (green) at 37°C for 90 min, DAPI (blue) was used to stain the cell nuclei. PBS instead of the primary antibody was used as the blank control.



The Raji (H) cells were incubated in 5%BSA to block non-specific protein-protein interactions (30 min at r.t.). Primary Antibody (green): CD20 : 1 ug/10⁶ cells; Secondary Antibody (white blue): Goat anti-Rabbit IgG-BF488: 1 ug/test. Blank control (black): PBS. Acquisition of 20,000 events was performed.

Note: This product is for in vitro research use only