

Integrin alpha 1 Rabbit mAb

Catalog No: #62259



Package Size: #62259-1 100ul

Orders: order@signalwayantibody.com
Support: tech@signalwayantibody.com

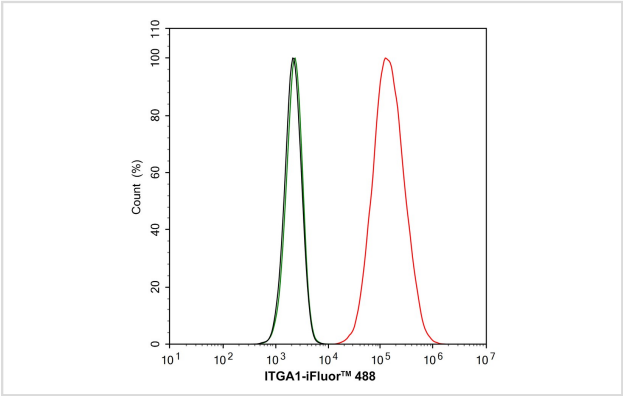
Description

Product Name	Integrin alpha 1 Rabbit mAb
Host Species	Rabbit
Clonality	Monoclonal
Clone No.	SR4568
Purification	Protein A affinity purified.
Applications	FC
Species Reactivity	Human
Immunogen Type	Protein
Immunogen Description	Recombinant protein within human Integrin alpha 1
Conjugates	unconjugated
Target Name	CD49a
Uniprot	P56199
Calculated MW	Predicted band size: 131 kDa
Concentration	1ug/ul
Formulation	PBS (pH7.4), 0.1% BSA, 40% Glycerol. Preservative: 0.05% Sodium Azide.
Storage	Store at +4°C after thawing. Aliquot store at -20°C. Avoid repeated freeze / thaw cycles.

Application Details

FC 1:1000;

Images



Flow cytometric analysis of HeLa cells labeling Integrin alpha 1.
Cells were washed twice with cold PBS and resuspend. Then stained with the primary antibody (1/1,000) (red) compared with Rabbit IgG Isotype Control (green). After incubation of the primary antibody at +4°C for an hour, the cells were stained with a iFluor 488 conjugate-Goat anti-Rabbit IgG Secondary antibody at 1/1,000 dilution for 30 minutes at +4°C. Unlabelled sample was used as a control (cells without incubation with primary antibody; black).

Note: This product is for in vitro research use only