

CD15 Rabbit mAb

Catalog No: #62261

Package Size: #62261-1 100ul

Orders: order@signalwayantibody.comSupport: tech@signalwayantibody.com

Description

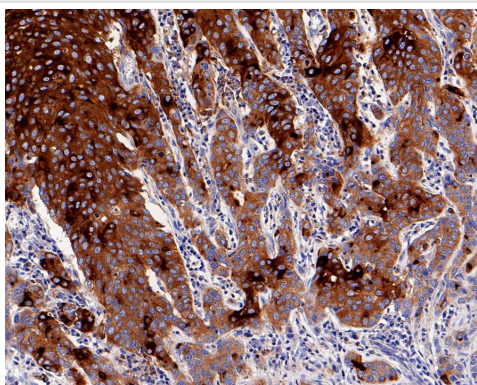
Product Name	CD15 Rabbit mAb
Host Species	Rabbit
Clonality	Monoclonal
Clone No.	SR4570
Purification	Protein A affinity purified.
Applications	IHC;FC
Species Reactivity	Human
Immunogen Description	Purified CD15
Conjugates	unconjugated
Target Name	CD15
Calculated MW	Predicted band size: 59 kDa
Concentration	1ug/ul
Formulation	PBS (pH7.4), 0.1% BSA, 40% Glycerol. Preservative: 0.05% Sodium Azide.
Storage	Store at +4°C after thawing. Aliquot store at -20°C. Avoid repeated freeze / thaw cycles.

Application Details

IHC 1:1000;

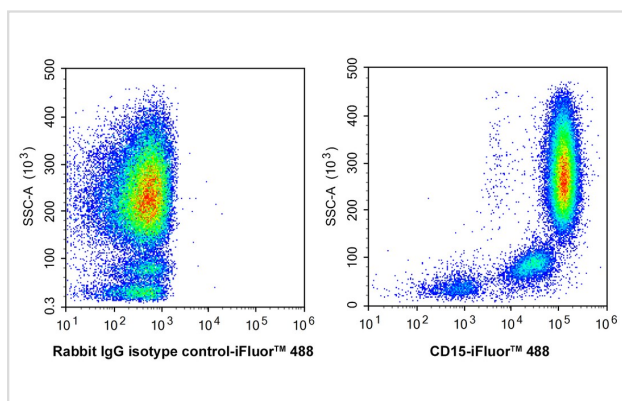
FC 1:1000;

Images



Immunohistochemical analysis of paraffin-embedded human breast carcinoma tissue with CD15 at 1/1,000 dilution. The section was pre-treated using heat mediated antigen retrieval with Tris-EDTA buffer (pH 9.0) for 20 minutes. The tissues were blocked in 1% BSA for 20 minutes at room temperature, washed with ddH₂O and PBS, and then probed with the primary antibody at 1/1,000 dilution for 1 hour at room temperature. The detection was performed using an HRP conjugated compact polymer system. DAB was used as the chromogen. Tissues were counterstained with hematoxylin and mounted with DPX.

Flow cytometry analysis of human peripheral blood granulocytes labelling CD15



Note: This product is for in vitro research use only