

Claudin 18 (SR4568) mouse mAb

Catalog No: #61184

Package Size: #61184-2 100ul

Orders: order@signalwayantibody.comSupport: tech@signalwayantibody.com

Description

| | |
|-----------------------|---|
| Product Name | Claudin 18 (SR4568) mouse mAb |
| Host Species | Mouse |
| Clonality | Monoclonal |
| Clone No. | SR4568 |
| Isotype | IgG1,kappa |
| Purification | The antibody was affinity-purified from rabbit antiserum by affinity-chromatography using epitope-specific immunogen. |
| Applications | IHC |
| Species Reactivity | Human |
| Specificity | The antibody can specifically recognize both human Claudin 18.1 and Claudin 18.2 protein. |
| Immunogen Type | Peptide |
| Immunogen Description | A synthetic peptide corresponding to the amino acid region 150-261 of the human Claudin 18 protein. |
| Target Name | Claudin 18 |
| Accession No. | Swiss-Prot: P56857 |
| Uniprot | P56857 |
| GeneID | 56492 |
| Calculated MW | 28kD |
| Formulation | The antibody is provided in liquid form in phosphate-buffered saline with 50% glycerol, 0.05% BSA, and 0.05% Proclin 300. |
| Storage | Store at -20°C for long term preservation (recommended). Store at 4°C for short term use. |

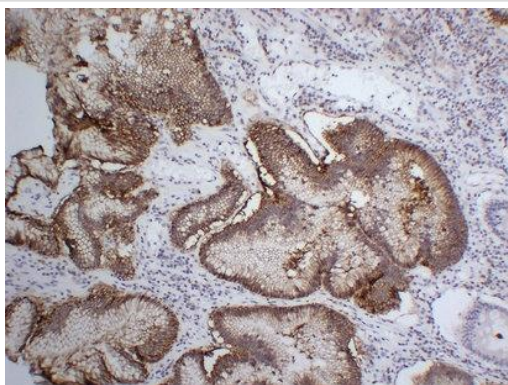
Application Details

IHC 1:200-400

Images



Human small intestine tissue was stained with anti-Claudin 18 (SR4568) Antibody



Human stomach tissue was stained with anti-Claudin 18 (SR4568) Antibody

Note: This product is for in vitro research use only