

RBM35A Antibody

Catalog No: #25264

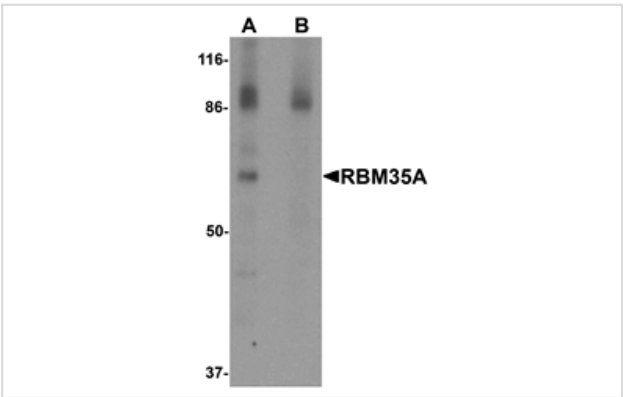


Orders: order@signalwayantibody.com
Support: tech@signalwayantibody.com

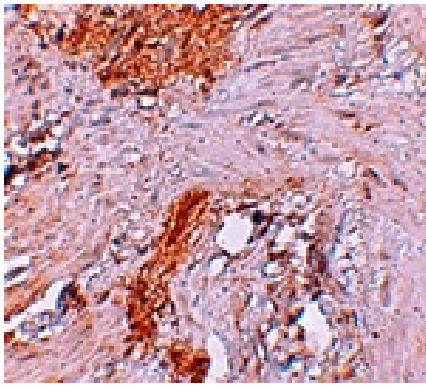
Description

Product Name	RBM35A Antibody
Host Species	Rabbit
Clonality	Polyclonal
Purification	Affinity chromatography purified via peptide column
Applications	ELISA WB IHC
Species Reactivity	Hu Ms Rt
Specificity	RBM35A antibody is predicted to not cross-react with other RBM35/ESRP family members. At least five isoforms of RBM35A are known to exist; this antibody will detect all five.
Immunogen Type	Peptide
Immunogen Description	Raised against a 18 amino acid peptide near the amino terminus of human RBM35A.
Target Name	RBM35A
Other Names	RNA-binding motif protein 35A, RMB35A, Epithelial splicing regulatory protein 1, ESRP1
Accession No.	Swiss-Prot:Q6NXG1Gene ID:54845
Uniprot	Q6NXG1
GeneID	54845;
Concentration	1mg/ml
Formulation	Supplied in PBS containing 0.02% sodium azide.
Storage	Can be stored at -20°C, stable for one year. As with all antibodies care should be taken to avoid repeated freeze thaw cycles. Antibodies should not be exposed to prolonged high temperatures.

Images



Western blot analysis of RBM35A in rat colon tissue lysate with RBM35A antibody at 0.5 ug/mL in (A) the absence and (B) the presence of blocking peptide.



Immunohistochemistry of RBM35A in human colon tissue with RBM35A antibody at 2.5 ug/mL.

Background

RBM35A, also known as ESRP1, is a mRNA splicing factor that with its related protein RBM35B (ESRP2) are coordinators of an epithelial cell-type-specific splicing program. RBM35A contains three putative RNA recognition motifs and acts by directly binding specific sequences in mRNAs. RBM35A is involved in posttranscriptional regulation of a number of genes such as FGFR2, CD44, CTNND1, and ENAH by exerting a differential effect on protein translation via 5' UTRs of mRNAs. Other recent studies have shown that RMB35A may also act as a novel tumor suppressor.

Note: This product is for in vitro research use only