

## LIF Antibody

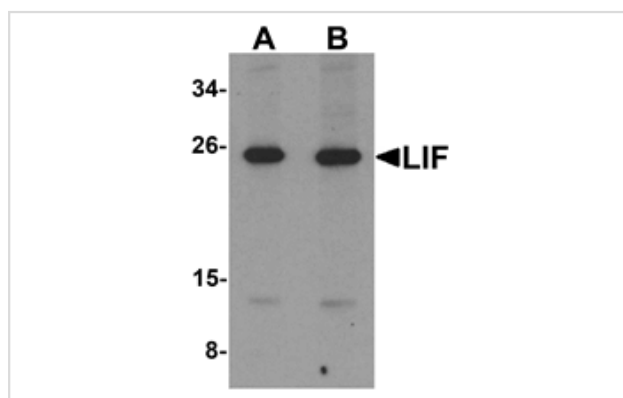
Catalog No: #25283

Orders: [order@signalwayantibody.com](mailto:order@signalwayantibody.com)Support: [tech@signalwayantibody.com](mailto:tech@signalwayantibody.com)

## Description

Product Name	LIF Antibody
Host Species	Rabbit
Clonality	Polyclonal
Purification	Affinity chromatography purified via peptide column
Applications	ELISA WB
Species Reactivity	Hu Ms Rt
Immunogen Type	Peptide
Immunogen Description	Raised against a 16 amino acid peptide near the center of human LIF.
Target Name	LIF
Other Names	Leukemia inhibitory factor, CDF, DIA, HILDA, MLPLI
Accession No.	Swiss-Prot:P15018Gene ID:3976
Uniprot	P15018
GeneID	3976;
Concentration	1mg/ml
Formulation	Supplied in PBS containing 0.02% sodium azide.
Storage	Can be stored at -20°C, stable for one year. As with all antibodies care should be taken to avoid repeated freeze thaw cycles. Antibodies should not be exposed to prolonged high temperatures.

## Images



Western blot analysis of LIF in 3T3 cell lysate with LIF antibody at (A) 1 and (B) 2 ug/mL.

## Background

LIF is a pleiotropic cytokine with roles in several different systems. It is involved in the induction of hematopoietic differentiation in normal and myeloid leukemia cells, induction of neuronal cell differentiation, regulator of mesenchymal to epithelial conversion during kidney development, and may also have a role in immune tolerance at the maternal-fetal interface. LIF was initially recognized by its ability to induce terminal differentiation of myeloid leukemic cells. It is a member of the IL-6 cytokine superfamily and can be highly glycosylated. LIF signaling is transduced through the LIF-R/gp130 receptor complex, leading to the phosphorylation and activation of the JAK/STAT pathway. Recent evidence shows that LIF inhibits cardiomyogenesis in embryonic stem cells via STAT3 activation.

---

Note: This product is for in vitro research use only