

ATAD3B Antibody

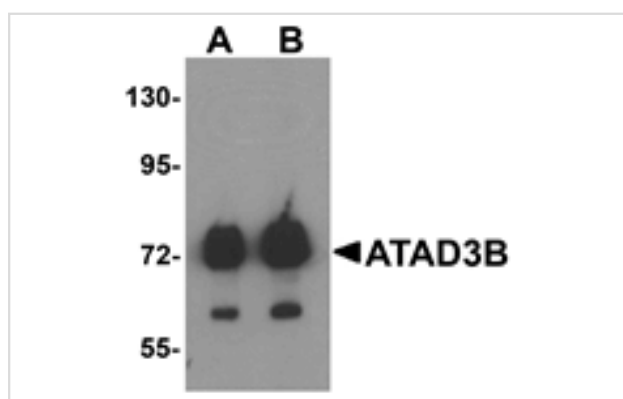
Catalog No: #25322

Orders: order@signalwayantibody.comSupport: tech@signalwayantibody.com

Description

Product Name	ATAD3B Antibody
Host Species	Rabbit
Clonality	Polyclonal
Purification	Affinity chromatography purified via peptide column
Applications	ELISA WB
Species Reactivity	Hu
Specificity	ATAD3B antibody is predicted to not cross-react with other ATAD protein family members. At least three isoforms of ATAD3B are known to exist.
Immunogen Type	Peptide
Immunogen Description	Raised against a 14 amino acid peptide near the carboxy terminus of human ATAD3B.
Target Name	ATAD3B
Other Names	ATPase family AAA domain-containing protein 3B, TOB3, AAA-
Accession No.	Swiss-Prot:Q5T9A4Gene ID:83858
Uniprot	Q5T9A4
GeneID	83858;
Concentration	1mg/ml
Formulation	Supplied in PBS containing 0.02% sodium azide.
Storage	Can be stored at -20°C, stable for one year. As with all antibodies care should be taken to avoid repeated freeze thaw cycles. Antibodies should not be exposed to prolonged high temperatures.

Images



Western blot analysis of ATAD3B in human kidney tissue lysate with ATAD3B antibody at (A) 1 and (B) 2 ug/mL .

Background

ATAD3B is a member of the AAA ATPase family, a family of proteins that catalyze ATP into ADP and are involved in several cellular functions such as cell-cycle regulation, protein proteolysis and transport. The AAA ATPase family is characterized by a highly conserved AAA motif containing Walker homology sequences and imparting ATPase activity. Mitochondrial membrane proteins ATAD3A/B contribute to the stabilization of nucleoids and may participate in the transformation pathway and the chemosensitivity of oligodendrogliomas. The gene encoding ATAD3A/B/C maps to human chromosome 1 and has been suggested to be an anti-apoptotic marker.

Note: This product is for in vitro research use only