

# SYTL5 Antibody

Catalog No: #25333

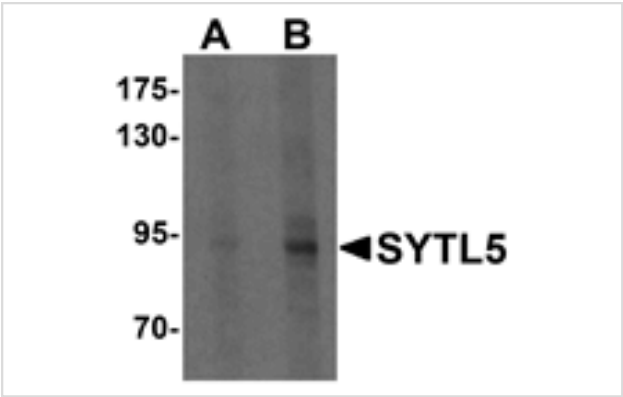


Orders: [order@signalwayantibody.com](mailto:order@signalwayantibody.com)  
Support: [tech@signalwayantibody.com](mailto:tech@signalwayantibody.com)

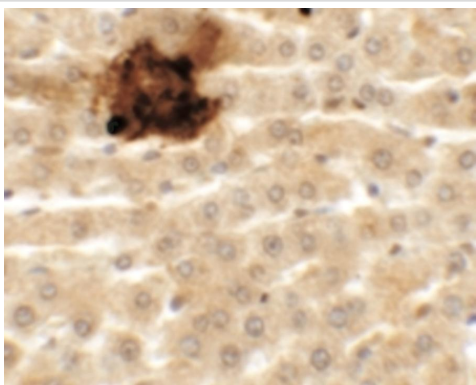
## Description

Product Name	SYTL5 Antibody
Host Species	Rabbit
Clonality	Polyclonal
Purification	Affinity chromatography purified via peptide column
Applications	ELISA, WB, IHC-P
Species Reactivity	Hu Ms Rt
Specificity	Multiple isoforms of SYTL5 are known to exist. SYTL5 antibody is predicted to not cross-react with other SYTL protein family members.
Immunogen Type	Peptide
Immunogen Description	Raised against a 17 amino acid peptide near the amino terminus of human SYTL5.
Target Name	SYTL5
Other Names	SLP5, Synaptotagmin-like protein 5
Accession No.	Swiss-Prot:Q8TDW5Gene ID:94122
Uniprot	Q8TDW5
GeneID	94122;
Concentration	1mg/ml
Formulation	Supplied in PBS containing 0.02% sodium azide.
Storage	Stored at 4°C for three months and -20°C, stable for up to one year. As with all antibodies care should be taken to avoid repeated freeze thaw cycles. Antibodies should not be exposed to prolonged high temperatures.

## Images



Western blot analysis of SYTL5 in HeLa cell lysate with SYTL5 antibody at (A) 1 and (B) 2 ug/mL .



Immunohistochemistry of SYTL5 in rat liver tissue with SYTL5 antibody at 5 ug/mL.

## Background

SYTL5 belongs to the synaptotagmin-like (Slp) protein family, which contains a unique Slp homolog domain (SHD) at the N-terminus. The SHD functions as a binding site for Rab27A, which plays a role in protein transport. Expression of SYTL5 is restricted to placenta and liver, suggesting that it might be involved in Rab27A-dependent membrane trafficking in specific tissues. Several members of the synaptotagmin family are calcium-sensing vesicle-fusion proteins as mediators of cell migration. SYTL7 & SYTL5 were positive regulators of chemotaxis, whereas SYTL2 was a negative regulator of chemotaxis.

Note: This product is for in vitro research use only