

LY6K Antibody

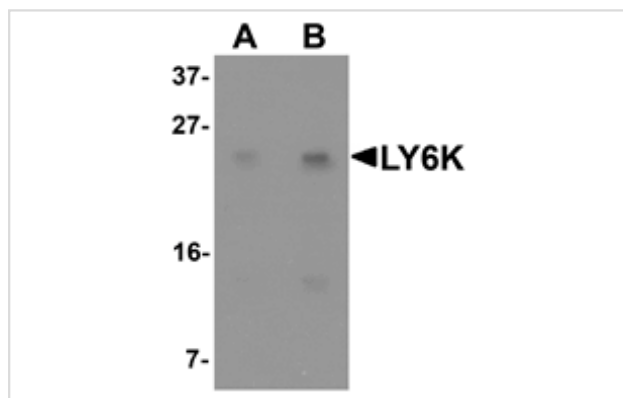
Catalog No: #25338

Orders: order@signalwayantibody.comSupport: tech@signalwayantibody.com

Description

Product Name	LY6K Antibody
Host Species	Rabbit
Clonality	Polyclonal
Purification	Affinity chromatography purified via peptide column
Applications	ELISA WB
Species Reactivity	Hu Ms Rt
Specificity	Multiple isoforms of LY6K are known to exist.
Immunogen Type	Peptide
Immunogen Description	Raised against an 18 amino acid peptide near the amino terminus of human LY6K.
Target Name	LY6K
Other Names	Lymphocyte antigen 6 complex locus K, ly-6K, CT97
Accession No.	Swiss-Prot:Q17RY6Gene ID:54742
Uniprot	Q17RY6
GeneID	54742;
Concentration	1mg/ml
Formulation	Supplied in PBS containing 0.02% sodium azide.
Storage	Can be stored at -20°C, stable for one year. As with all antibodies care should be taken to avoid repeated freeze thaw cycles. Antibodies should not be exposed to prolonged high temperatures.

Images



Western blot analysis of LY6K in HeLa cell lysate with LY6K antibody at (A) 1 and (B) 2 ug/mL.

Background

The lymphocyte antigen 6 complex locus K (LY6K), a member of cancer-testis antigen was initially identified as a molecular marker for head-and-neck squamous cell carcinoma as well a breast cancer. LY6K is a GPI-anchored membrane protein that is specifically associated with germ cell marker TEX101 and is strongly observed in testis, but only weakly in other tissues. LY6K mRNA was found to be upregulated in numerous bladder cancers due to gene amplification. Furthermore, knockdown experiments using LY6K siRNA reduced cell growth, migration and invasion in bladder carcinoma cell lines, suggesting that LY6K contributes to bladder cancer development.

Note: This product is for in vitro research use only