

## CHD7 Antibody

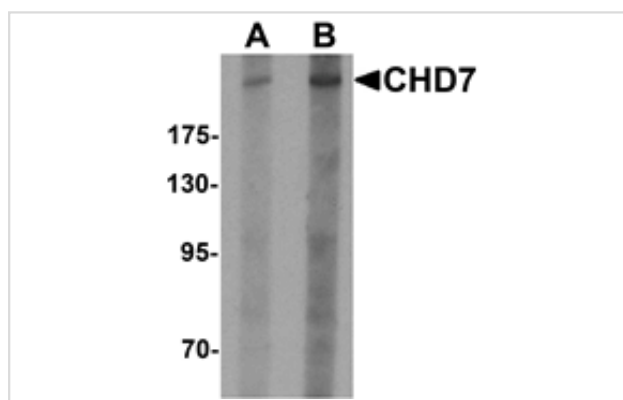
Catalog No: #25340

Orders: [order@signalwayantibody.com](mailto:order@signalwayantibody.com)Support: [tech@signalwayantibody.com](mailto:tech@signalwayantibody.com)

## Description

Product Name	CHD7 Antibody
Host Species	Rabbit
Clonality	Polyclonal
Purification	Affinity chromatography purified via peptide column
Applications	ELISA WB
Species Reactivity	Hu Ms
Specificity	Multiple isoforms of CHD7 are known to exist.
Immunogen Type	Peptide
Immunogen Description	Raised against an 18 amino acid peptide near the amino terminus of human CHD7.
Target Name	CHD7
Other Names	Chromodomain helicase DNA binding protein 7, IS3, KAL5
Accession No.	Q9P2D1
Uniprot	Q9P2D1
GeneID	55636;
Concentration	1mg/ml
Formulation	Supplied in PBS containing 0.02% sodium azide.
Storage	Can be stored at -20°C, stable for one year. As with all antibodies care should be taken to avoid repeated freeze thaw cycles. Antibodies should not be exposed to prolonged high temperatures.

## Images



Western blot analysis of CHD7 in SK-N-SH cell lysate with CHD7 antibody at (A) 1 and (B) 2 ug/mL.

## Background

CHD proteins belong to a superfamily of proteins of ATP-dependent chromatin remodeling enzymes that have a unique combination of functional domains, including two N-terminal chromodomains, a SNF2-like ATPase/helicase domain and a DNA-binding domain. These proteins are thought to play a role in early embryonic development by affecting chromatin structure and gene expression. Mutations in one member of this family, CHD7, result in CHARGE syndrome. It colocalizes with embryonic stem (ES) cell master regulators OCT4/POU5F1, SOX2, and NANOG and is thought to modulate ES-specific gene transcription. Together with SOX2, CHD7 has been suggested to also regulate several human disease genes.

---

Note: This product is for in vitro research use only